

Datasheet for ABIN542761  
**anti-PSMD4/ASF antibody (AA 300-328)**[Go to Product page](#)[2 Images](#)[3 Publications](#)

## Overview

Quantity:	400 µL
Target:	PSMD4/ASF (Psm4)
Binding Specificity:	AA 300-328
Reactivity:	Human
Host:	Rabbit
Clonality:	Polyclonal
Conjugate:	This PSMD4/ASF antibody is un-conjugated
Application:	Western Blotting (WB), ELISA

## Product Details

Purpose:	Rabbit polyclonal antibody raised against synthetic peptide of PSMD4.
Immunogen:	A synthetic peptide (conjugated with KLH) corresponding to amino acids 300-328 of human PSMD4.
Cross-Reactivity:	Human

## Target Details

Target:	PSMD4/ASF (Psm4)
Alternative Name:	PSMD4 ( <a href="#">Psm4 Products</a> )
Gene ID:	5710
Pathways:	<a href="#">Mitotic G1-G1/S Phases</a> , <a href="#">DNA Replication</a> , <a href="#">Synthesis of DNA</a> , <a href="#">Ubiquitin Proteasome Pathway</a>

## Application Details

Application Notes:	Western Blot (1:1000) Immunohistochemistry (1:50-100) The optimal working dilution should be determined by the end user.
--------------------	--

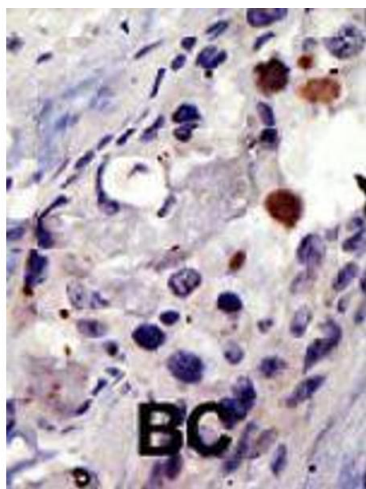
Restrictions:	For Research Use only
---------------	-----------------------

## Handling

Format:	Liquid
Buffer:	In PBS (0.09 % sodium azide).
Preservative:	Sodium azide
Precaution of Use:	This product contains Sodium azide: a POISONOUS AND HAZARDOUS SUBSTANCE which should be handled by trained staff only.
Storage:	4 °C,-20 °C
Storage Comment:	Store at 4°C. For long term storage store at -20°C. Aliquot to avoid repeated freezing and thawing.

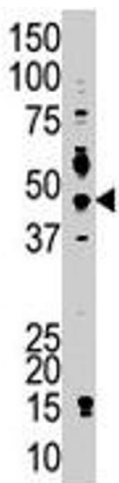
## Publications

Product cited in:	Walters, Kleijnen, Goh, Wagner, Howley: "Structural studies of the interaction between ubiquitin family proteins and proteasome subunit S5a." in: <b>Biochemistry</b> , Vol. 41, Issue 6, pp. 1767-77, (2002) ( <a href="#">PubMed</a> ).
	Tanahashi, Murakami, Minami, Shimbara, Hendil, Tanaka: "Hybrid proteasomes. Induction by interferon-gamma and contribution to ATP-dependent proteolysis." in: <b>The Journal of biological chemistry</b> , Vol. 275, Issue 19, pp. 14336-45, (2000) ( <a href="#">PubMed</a> ).
	Kawahara, Kasahara, Nishiyama, Ohsumi, Goto, Kishimoto, Saeki, Yokosawa, Shimbara, Murata, Chiba, Suzuki, Tanaka: "Developmentally regulated, alternative splicing of the Rpn10 gene generates multiple forms of 26S proteasomes." in: <b>The EMBO journal</b> , Vol. 19, Issue 15, pp. 4144-53, (2000) ( <a href="#">PubMed</a> ).



#### Immunohistochemistry

**Image 1.** Formalin-fixed and paraffin-embedded human cancer tissue reacted with PSMD4 polyclonal antibody , which was peroxidase-conjugated to the secondary antibody, followed by AEC staining. This data demonstrates the use of this antibody for immunohistochemistry; clinical relevance has not been evaluated. BC = breast carcinoma.



#### Western Blotting

**Image 2.** The PSMD4 polyclonal antibody is used in Western blot to detect PSMD4 in Jurkat cell lysate.