

Datasheet for ABIN542782

anti-RNF216 antibody (C-Term)**2** Images**3** Publications[Go to Product page](#)

Overview

Quantity:	400 µL
Target:	RNF216
Binding Specificity:	C-Term
Reactivity:	Human, Mouse
Host:	Rabbit
Clonality:	Polyclonal
Conjugate:	This RNF216 antibody is un-conjugated
Application:	Western Blotting (WB), Immunohistochemistry (Paraffin-embedded Sections) (IHC (p))

Product Details

Purpose:	Rabbit polyclonal antibody raised against synthetic peptide of RNF216.
Immunogen:	A synthetic peptide (conjugated with KLH) corresponding to C-terminus of human RNF216.
Cross-Reactivity:	Human, Mouse

Target Details

Target:	RNF216
Alternative Name:	RNF216 (RNF216 Products)
Gene ID:	54476

Application Details

Application Notes:	Western Blot (1:1000) Immunohistochemistry (1:50-100) The optimal working dilution should be determined by the end user.
--------------------	--

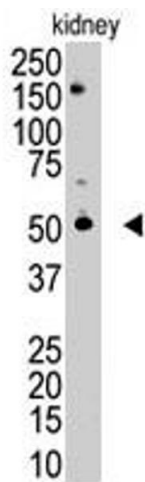
Restrictions:	For Research Use only
---------------	-----------------------

Handling

Format:	Liquid
Buffer:	In PBS (0.09 % sodium azide)
Preservative:	Sodium azide
Precaution of Use:	This product contains Sodium azide: a POISONOUS AND HAZARDOUS SUBSTANCE which should be handled by trained staff only.
Storage:	4 °C,-20 °C
Storage Comment:	Store at 4°C. For long term storage store at -20°C. Aliquot to avoid repeated freezing and thawing.

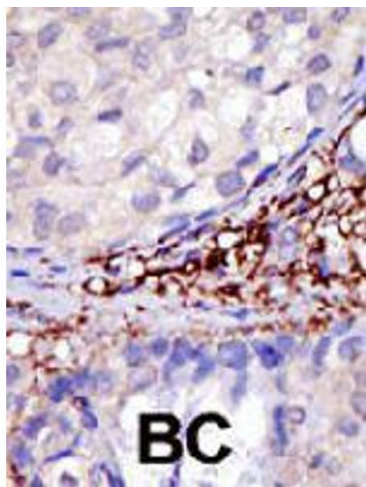
Publications

Product cited in:	<p>Ota, Suzuki, Nishikawa, Otsuki, Sugiyama, Irie, Wakamatsu, Hayashi, Sato, Nagai, Kimura, Makita, Sekine, Obayashi, Nishi, Shibahara, Tanaka, Ishii, Yamamoto, Saito, Kawai, Isono, Nakamura, Nagahari et al.: "Complete sequencing and characterization of 21,243 full-length human cDNAs. ..." in: Nature genetics, Vol. 36, Issue 1, pp. 40-5, (2003) (PubMed).</p> <p>Chen, Li, Zhai, Shu: "A novel zinc finger protein interacts with receptor-interacting protein (RIP) and inhibits tumor necrosis factor (TNF)- and IL1-induced NF-kappa B activation." in: The Journal of biological chemistry, Vol. 277, Issue 18, pp. 15985-91, (2002) (PubMed).</p> <p>Strausberg, Feingold, Grouse, Derge, Klausner, Collins, Wagner, Shenmen, Schuler, Altschul, Zeeberg, Buetow, Schaefer, Bhat, Hopkins, Jordan, Moore, Max, Wang, Hsieh, Diatchenko, Marusina, Farmer et al.: "Generation and initial analysis of more than 15,000 full-length human and mouse cDNA sequences. ..." in: Proceedings of the National Academy of Sciences of the United States of America, Vol. 99, Issue 26, pp. 16899-903, (2002) (PubMed).</p>
-------------------	---



Western Blotting

Image 1. The RNF216 polyclonal antibody is used in Western blot to detect RNF216 in mouse kidney tissue lysate.



Immunohistochemistry

Image 2. Formalin-fixed and paraffin-embedded human cancer tissue reacted with RNF216 polyclonal antibody , which was peroxidase-conjugated to the secondary antibody, followed by DAB staining. This data demonstrates the use of this antibody for immunohistochemistry; clinical relevance has not been evaluated. BC = breast carcinoma.