

Datasheet for ABIN542785  
**anti-RBCK1 antibody (N-Term)**[2 Images](#)[1 Publication](#)[Go to Product page](#)

## Overview

Quantity:	400 µL
Target:	RBCK1
Binding Specificity:	N-Term
Reactivity:	Human, Mouse
Host:	Rabbit
Clonality:	Polyclonal
Conjugate:	This RBCK1 antibody is un-conjugated
Application:	Western Blotting (WB), Immunohistochemistry (Paraffin-embedded Sections) (IHC (p))

## Product Details

Purpose:	Rabbit polyclonal antibody raised against synthetic peptide of RBCK1.
Immunogen:	A synthetic peptide (conjugated with KLH) corresponding to N-terminus of human RBCK1.
Cross-Reactivity:	Human, Mouse

## Target Details

Target:	RBCK1
Alternative Name:	RBCK1 / RNF54 ( <a href="#">RBCK1 Products</a> )
Gene ID:	10616

## Application Details

Application Notes:	Western Blot (1:1000) Immunohistochemistry (1:50-100) The optimal working dilution should be determined by the end user.
Restrictions:	For Research Use only

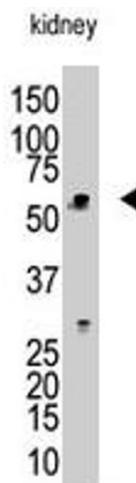
## Handling

Format:	Liquid
Buffer:	In PBS (0.09 % sodium azide)
Preservative:	Sodium azide
Precaution of Use:	This product contains Sodium azide: a POISONOUS AND HAZARDOUS SUBSTANCE which should be handled by trained staff only.
Storage:	4 °C,-20 °C
Storage Comment:	Store at 4°C. For long term storage store at -20°C. Aliquot to avoid repeated freezing and thawing.

## Publications

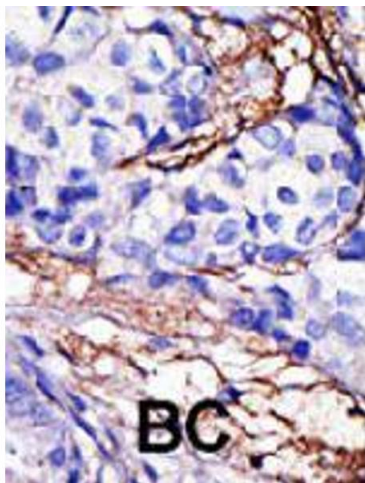
Product cited in:	Yamanaka, Ishikawa, Megumi, Tokunaga, Kanie, Rouault, Morishima, Minato, Ishimori, Iwai: "Identification of the ubiquitin-protein ligase that recognizes oxidized IRP2." in: <b>Nature cell biology</b> , Vol. 5, Issue 4, pp. 336-40, (2003) ( <a href="#">PubMed</a> ).
-------------------	---

## Images



**Western Blotting**

**Image 1.** The RBCK1 polyclonal antibody is used in Western blot to detect RBCK1 in mouse kidney tissue lysate.



#### Immunohistochemistry

**Image 2.** Formalin-fixed and paraffin-embedded human cancer tissue reacted with RBC1 polyclonal antibody , which was peroxidase-conjugated to the secondary antibody, followed by DAB staining. This data demonstrates the use of this antibody for immunohistochemistry; clinical relevance has not been evaluated. BC = breast carcinoma.