



Datasheet for ABIN543034
anti-E2F1 antibody (Ser332)



[Go to Product page](#)

1 Image

3 Publications

Overview

Quantity:	400 µL
Target:	E2F1
Binding Specificity:	Ser332
Reactivity:	Human
Host:	Rabbit
Clonality:	Polyclonal
Conjugate:	This E2F1 antibody is un-conjugated
Application:	Western Blotting (WB)

Product Details

Purpose:	Rabbit polyclonal antibody raised against synthetic peptide of E2F1.
Immunogen:	A synthetic peptide (conjugated with KLH) corresponding to residues surrounding S332 of human E2F1.
Cross-Reactivity:	Human

Target Details

Target:	E2F1
Alternative Name:	E2F1 (E2F1 Products)
Gene ID:	1869
Pathways:	p53 Signaling , Cell Division Cycle , Mitotic G1-G1/S Phases , DNA Replication , M Phase ,

Target Details

Autophagy

Application Details

Application Notes: Western Blot (1:1000)
The optimal working dilution should be determined by the end user.

Restrictions: For Research Use only

Handling

Format: Liquid

Buffer: In PBS (0.09 % sodium azide)

Preservative: Sodium azide

Precaution of Use: This product contains Sodium azide: a POISONOUS AND HAZARDOUS SUBSTANCE which should be handled by trained staff only.

Storage: 4 °C,-20 °C

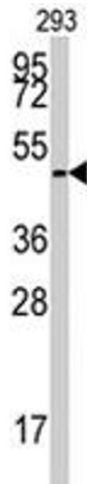
Storage Comment: Store at 4°C. For long term storage store at -20°C.
Aliquot to avoid repeated freezing and thawing.

Publications

Product cited in: ODonnell, Wentzel, Zeller, Dang, Mendell: "c-Myc-regulated microRNAs modulate E2F1 expression." in: **Nature**, Vol. 435, Issue 7043, pp. 839-43, (2005) ([PubMed](#)).

Wang, Hou, Mohapatra, Ma, Cress, Pledger, Chen: "Activation of p27Kip1 Expression by E2F1. A negative feedback mechanism." in: **The Journal of biological chemistry**, Vol. 280, Issue 13, pp. 12339-43, (2005) ([PubMed](#)).

Joshi, Ordonez-Ercan, Dasgupta, Chellappan: "Induction of human metallothionein 1G promoter by VEGF and heavy metals: differential involvement of E2F and metal transcription factors." in: **Oncogene**, Vol. 24, Issue 13, pp. 2204-17, (2005) ([PubMed](#)).



Western Blotting

Image 1. Western blot analysis of E2F1 polyclonal antibody in 293 cell line lysates (35 ug/lane). E2F1 (arrow) was detected using the purified Polyclonal antibody.