

Datasheet for ABIN543188

anti-Histone H3.3 antibody (AA 1-30)**1** Image**1** Publication[Go to Product page](#)

Overview

Quantity:	400 µL
Target:	Histone H3.3 (H3F3A)
Binding Specificity:	AA 1-30
Reactivity:	Human
Host:	Rabbit
Clonality:	Polyclonal
Conjugate:	This Histone H3.3 antibody is un-conjugated
Application:	Dot Blot (DB)

Product Details

Purpose:	Rabbit polyclonal antibody raised against synthetic peptide of H3F3A, H3F3B.
Immunogen:	A synthetic peptide (conjugated with KLH) corresponding to amino acids 1-30 of human H3 histone.
Isotype:	IgG
Cross-Reactivity:	Human
Purification:	Purified

Target Details

Target:	Histone H3.3 (H3F3A)
Alternative Name:	H3F3A (H3F3A Products)

Target Details

Gene ID: 3020, 3021

Application Details

Application Notes: Dot Blot (1:500)
The optimal working dilution should be determined by the end user.

Restrictions: For Research Use only

Handling

Format: Liquid

Buffer: In PBS (0.09 % sodium azide)

Preservative: Sodium azide

Precaution of Use: This product contains Sodium azide: a POISONOUS AND HAZARDOUS SUBSTANCE which should be handled by trained staff only.

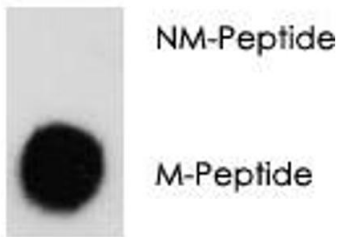
Storage: 4 °C, -20 °C

Storage Comment: Store at 4°C. For long term storage store at -20°C.
Aliquot to avoid repeated freezing and thawing.

Publications

Product cited in: Marzluff, Gongidi, Woods, Jin, Maltais: "The human and mouse replication-dependent histone genes." in: **Genomics**, Vol. 80, Issue 5, pp. 487-98, (2002) ([PubMed](#)).

M-Pab



Dot Blot

Image 1. Dot blot analysis of H3F3A/H3F3B polyclonal antibody on nitrocellulose membrane. 50 ng of Methyl-peptide or Non Methyl-peptide per dot were adsorbed.

Dot Blot