

Datasheet for ABIN543232  
**anti-MAP2K5 antibody (Ser149)**[Go to Product page](#)

2 Images

1 Publication

## Overview

Quantity:	400 µL
Target:	MAP2K5
Binding Specificity:	Ser149
Reactivity:	Human
Host:	Rabbit
Clonality:	Polyclonal
Conjugate:	This MAP2K5 antibody is un-conjugated
Application:	Western Blotting (WB), Immunohistochemistry (Paraffin-embedded Sections) (IHC (p))

## Product Details

Purpose:	Rabbit polyclonal antibody raised against synthetic peptide of MAP2K5.
Immunogen:	A synthetic peptide (conjugated with KLH) corresponding to residues surrounding S149 of human MAP2K5.
Cross-Reactivity:	Human

## Target Details

Target:	MAP2K5
Alternative Name:	MAP2K5 ( <a href="#">MAP2K5 Products</a> )
Gene ID:	5607
Pathways:	<a href="#">MAPK Signaling</a> , <a href="#">Neurotrophin Signaling Pathway</a>

## Application Details

Application Notes:	Western Blot (1:1000) Immunohistochemistry (1:10-50) The optimal working dilution should be determined by the end user.
Restrictions:	For Research Use only

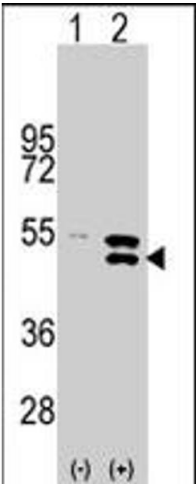
## Handling

Format:	Liquid
Buffer:	In PBS (0.09 % sodium azide)
Preservative:	Sodium azide
Precaution of Use:	This product contains Sodium azide: a POISONOUS AND HAZARDOUS SUBSTANCE which should be handled by trained staff only.
Storage:	4 °C,-20 °C
Storage Comment:	Store at 4°C. For long term storage store at -20°C. Aliquot to avoid repeated freezing and thawing.

## Publications

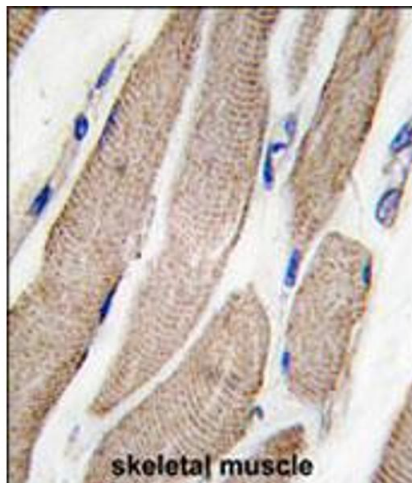
Product cited in:	Raviv, Kalie, Seger: "MEK5 and ERK5 are localized in the nuclei of resting as well as stimulated cells, while MEKK2 translocates from the cytosol to the nucleus upon stimulation." in: <b>Journal of cell science</b> , Vol. 117, Issue Pt 9, pp. 1773-84, (2004) ( <a href="#">PubMed</a> ).
-------------------	--

## Images



### Western Blotting

**Image 1.** Western blot analysis of MAP2K5 (arrow) using rabbit MAP2K5 polyclonal antibody . 293 cell lysates (2 ug/lane) either nontransfected (Lane 1) or transiently transfected with the MAP2K5 gene (Lane 2) (Origene Technologies).



### Immunohistochemistry

**Image 2.** Formalin-fixed and paraffin-embedded human skeletal muscle tissue reacted with MAP2K5 polyclonal antibody , which was peroxidase-conjugated to the secondary antibody, followed by DAB staining. This data demonstrates the use of this antibody for immunohistochemistry ; clinical relevance has not been evaluated.