

Datasheet for ABIN543253
anti-MAP3K9 antibody (C-Term)[Go to Product page](#)

2 Images

1 Publication

Overview

Quantity:	400 µL
Target:	MAP3K9
Binding Specificity:	C-Term
Reactivity:	Human, Mouse, Rat
Host:	Rabbit
Clonality:	Polyclonal
Conjugate:	This MAP3K9 antibody is un-conjugated
Application:	Western Blotting (WB), Immunohistochemistry (Paraffin-embedded Sections) (IHC (p))

Product Details

Purpose:	Rabbit polyclonal antibody raised against synthetic peptide of MAP3K9.
Immunogen:	A synthetic peptide (conjugated with KLH) corresponding to C-terminus of human MAP3K9.
Cross-Reactivity:	Human, Mouse, Rat

Target Details

Target:	MAP3K9
Alternative Name:	MAP3K9 (MAP3K9 Products)
Gene ID:	4293

Application Details

Application Notes:	Western Blot (1:1000) Immunohistochemistry (1:50-100) The optimal working dilution should be determined by the end user.
Restrictions:	For Research Use only

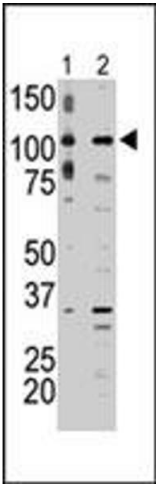
Handling

Format:	Liquid
Buffer:	In PBS (0.09 % sodium azide)
Preservative:	Sodium azide
Precaution of Use:	This product contains Sodium azide: a POISONOUS AND HAZARDOUS SUBSTANCE which should be handled by trained staff only.
Storage:	4 °C,-20 °C
Storage Comment:	Store at 4°C. For long term storage store at -20°C. Aliquot to avoid repeated freezing and thawing.

Publications

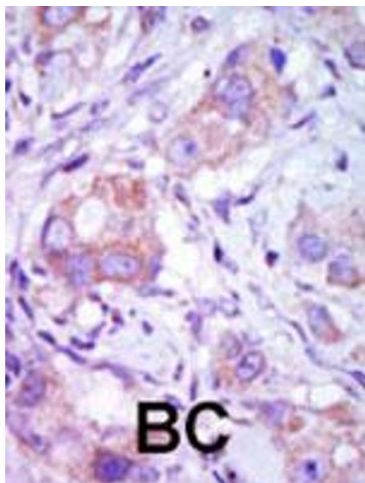
Product cited in:	Durkin, Holskin, Kopec, Reed, Spais, Steffy, Gessner, Angeles, Pohl, Ator, Meyer: "Phosphoregulation of mixed-lineage kinase 1 activity by multiple phosphorylation in the activation loop." in: Biochemistry , Vol. 43, Issue 51, pp. 16348-55, (2004) (PubMed).
-------------------	--

Images



Western Blotting

Image 1. The MAP3K9 polyclonal antibody is used in Western blot to detect MAP3K9 in A-375 cell lysate (lane 1) and rat testis tissue lysate (lane 2) .



Immunohistochemistry

Image 2. Formalin-fixed and paraffin-embedded human cancer tissue reacted with the MAP3K9 polyclonal antibody , which was peroxidase-conjugated to the secondary antibody, followed by DAB staining. This data demonstrates the use of this antibody for immunohistochemistry ; clinical relevance has not been evaluated. BC = breast carcinoma.