

Datasheet for ABIN543317
anti-MLL/KMT2A antibody (AA 312-343)[Go to Product page](#)**1** Image**3** Publications

Overview

Quantity:	400 µL
Target:	MLL/KMT2A (MLL)
Binding Specificity:	AA 312-343
Reactivity:	Human
Host:	Rabbit
Clonality:	Polyclonal
Conjugate:	This MLL/KMT2A antibody is un-conjugated
Application:	Immunohistochemistry (Paraffin-embedded Sections) (IHC (p))

Product Details

Purpose:	Rabbit polyclonal antibody raised against synthetic peptide of MLL.
Immunogen:	A synthetic peptide (conjugated with KLH) corresponding to amino acids 312-343 at C-terminus of human MLL.
Cross-Reactivity:	Human

Target Details

Target:	MLL/KMT2A (MLL)
Alternative Name:	MLL / HRX (MLL Products)
Gene ID:	4297
Pathways:	Warburg Effect

Application Details

Application Notes: Immunohistochemistry (1:10-50)
The optimal working dilution should be determined by the end user.

Restrictions: For Research Use only

Handling

Format: Liquid

Buffer: In PBS (0.09 % sodium azide)

Preservative: Sodium azide

Precaution of Use: This product contains Sodium azide: a POISONOUS AND HAZARDOUS SUBSTANCE which should be handled by trained staff only.

Storage: 4 °C, -20 °C

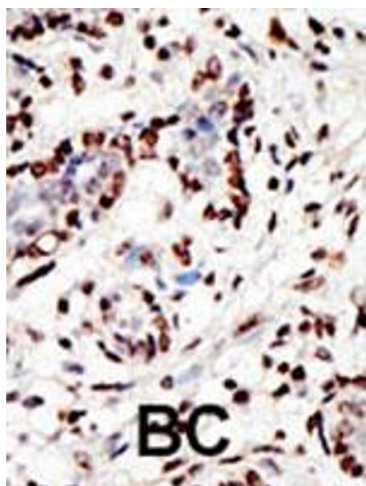
Storage Comment: Store at 4°C. For long term storage store at -20°C.
Aliquot to avoid repeated freezing and thawing.

Publications

Product cited in: Pegram, Megonigal, Lange, Nowell, Rowley, Rappaport, Felix: "t(3;11) translocation in treatment-related acute myeloid leukemia fuses MLL with the GMPS (GUANOSINE 5' MONOPHOSPHATE SYNTHETASE) gene." in: **Blood**, Vol. 96, Issue 13, pp. 4360-2, (2000) ([PubMed](#)).

Sano, Hayakawa, Piao, Kosaka, Nakamura: "Novel SH3 protein encoded by the AF3p21 gene is fused to the mixed lineage leukemia protein in a therapy-related leukemia with t(3;11) (p21;q23). " in: **Blood**, Vol. 95, Issue 3, pp. 1066-8, (2000) ([PubMed](#)).

Megonigal, Cheung, Rappaport, Nowell, Wilson, Jones, Addya, Leonard, Kushner, Williams, Lange, Felix: "Detection of leukemia-associated MLL-GAS7 translocation early during chemotherapy with DNA topoisomerase II inhibitors." in: **Proceedings of the National Academy of Sciences of the United States of America**, Vol. 97, Issue 6, pp. 2814-9, (2000) ([PubMed](#)).



Immunohistochemistry

Image 1. Formalin-fixed and paraffin-embedded human cancer tissue reacted with the MLL polyclonal antibody , which was peroxidase-conjugated to the secondary antibody, followed by AEC staining. This data demonstrates the use of this antibody for immunohistochemistry ; clinical relevance has not been evaluated. BC = breast carcinoma.