

Datasheet for ABIN543332
anti-SETD7 antibody (C-Term)[Go to Product page](#)

1 Image

3 Publications

Overview

| | |
|----------------------|--------------------------------------|
| Quantity: | 400 µL |
| Target: | SETD7 |
| Binding Specificity: | C-Term |
| Reactivity: | Human |
| Host: | Rabbit |
| Clonality: | Polyclonal |
| Conjugate: | This SETD7 antibody is un-conjugated |
| Application: | Western Blotting (WB) |

Product Details

| | |
|-------------------|---|
| Purpose: | Rabbit polyclonal antibody raised against synthetic peptide of SETD7. |
| Immunogen: | A synthetic peptide (conjugated with KLH) corresponding to C-terminus of human SETD7. |
| Cross-Reactivity: | Human |

Target Details

| | |
|-------------------|---|
| Target: | SETD7 |
| Alternative Name: | SETD7 / SET9 (SETD7 Products) |
| Gene ID: | 80854 |

Application Details

| | |
|--------------------|---|
| Application Notes: | Western Blot (1:1000) The optimal working dilution should be determined by the end user. |
|--------------------|---|

| | |
|---------------|-----------------------|
| Restrictions: | For Research Use only |
|---------------|-----------------------|

Handling

| | |
|---------|--------|
| Format: | Liquid |
|---------|--------|

| | |
|---------|------------------------------|
| Buffer: | In PBS (0.09 % sodium azide) |
|---------|------------------------------|

| | |
|---------------|--------------|
| Preservative: | Sodium azide |
|---------------|--------------|

| | |
|--------------------|--|
| Precaution of Use: | This product contains Sodium azide: a POISONOUS AND HAZARDOUS SUBSTANCE which should be handled by trained staff only. |
|--------------------|--|

| | |
|----------|-------------|
| Storage: | 4 °C,-20 °C |
|----------|-------------|

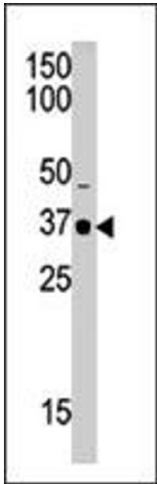
| | |
|------------------|--|
| Storage Comment: | Store at 4°C. For long term storage store at -20°C. Aliquot to avoid repeated freezing and thawing. |
|------------------|--|

Publications

| | |
|-------------------|--|
| Product cited in: | Chuikov, Kurash, Wilson, Xiao, Justin, Ivanov, McKinney, Tempst, Prives, Gambelin, Barlev, Reinberg: "Regulation of p53 activity through lysine methylation." in: Nature , Vol. 432, Issue 7015, pp. 353-60, (2004) (PubMed). |
|-------------------|--|

Xiao, Jing, Wilson, Walker, Vasisht, Kelly, Howell, Taylor, Blackburn, Gambelin: "Structure and catalytic mechanism of the human histone methyltransferase SET7/9." in: **Nature**, Vol. 421, Issue 6923, pp. 652-6, (2003) ([PubMed](#)).

Wysocka, Myers, Laherty, Eisenman, Herr: "Human Sin3 deacetylase and trithorax-related Set1/Ash2 histone H3-K4 methyltransferase are tethered together selectively by the cell-proliferation factor HCF-1." in: **Genes & development**, Vol. 17, Issue 7, pp. 896-911, (2003) ([PubMed](#)).



Western Blotting

Image 1. Western blot analysis of SETD7 polyclonal antibody in mouse brain tissue lysate (35 ug/lane). SETD7 (arrow) was detected using the purified polyclonal antibody.