



[Go to Product page](#)

Datasheet for ABIN543367

anti-SUMO2 antibody (N-Term)

1 Image

1 Publication

Overview

Quantity:	400 µL
Target:	SUMO2
Binding Specificity:	N-Term
Reactivity:	Human
Host:	Rabbit
Clonality:	Polyclonal
Conjugate:	This SUMO2 antibody is un-conjugated
Application:	Western Blotting (WB)

Product Details

Purpose:	Rabbit polyclonal antibody raised against synthetic peptide of SUMO2.
Immunogen:	A synthetic peptide (conjugated with KLH) corresponding to N-terminus of human SUMO2.
Cross-Reactivity:	Human

Target Details

Target:	SUMO2
Alternative Name:	SUMO2 (SUMO2 Products)
Gene ID:	6613
Pathways:	Methionine Biosynthetic Process

Application Details

Application Notes: Western Blot (1:1000)
The optimal working dilution should be determined by the end user.

Restrictions: For Research Use only

Handling

Format: Liquid

Buffer: In PBS (0.09 % sodium azide)

Preservative: Sodium azide

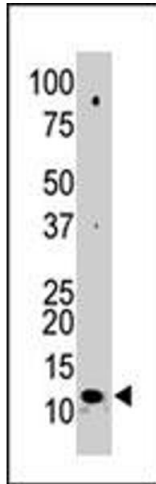
Precaution of Use: This product contains Sodium azide: a POISONOUS AND HAZARDOUS SUBSTANCE which should be handled by trained staff only.

Storage: 4 °C,-20 °C

Storage Comment: Store at 4°C. For long term storage store at -20°C.
Aliquot to avoid repeated freezing and thawing.

Publications

Product cited in: Strausberg, Feingold, Grouse, Derge, Klausner, Collins, Wagner, Shenmen, Schuler, Altschul, Zeeberg, Buetow, Schaefer, Bhat, Hopkins, Jordan, Moore, Max, Wang, Hsieh, Diatchenko, Marusina, Farmer et al.: "Generation and initial analysis of more than 15,000 full-length human and mouse cDNA sequences. ..." in: **Proceedings of the National Academy of Sciences of the United States of America**, Vol. 99, Issue 26, pp. 16899-903, (2002) ([PubMed](#)).



Western Blotting

Image 1. Western blot analysis of SUMO2 polyclonal antibody in 293 cell lysate. SUMO2 (arrow) was detected using purified polyclonal antibody. Secondary HRP-anti-rabbit was used for signal visualization with chemiluminescence.