

Datasheet for ABIN543684
anti-CDK16 antibody (C-Term)[Go to Product page](#)

1 Image

1 Publication

Overview

Quantity:	400 µL
Target:	CDK16
Binding Specificity:	C-Term
Reactivity:	Human
Host:	Rabbit
Clonality:	Polyclonal
Conjugate:	This CDK16 antibody is un-conjugated
Application:	Western Blotting (WB)

Product Details

Purpose:	Rabbit polyclonal antibody raised against synthetic peptide of PCTK1.
Immunogen:	A synthetic peptide (conjugated with KLH) corresponding to C-terminus of human PCTK1.
Cross-Reactivity:	Human

Target Details

Target:	CDK16
Alternative Name:	CDK16 / PCTK1 (CDK16 Products)
Gene ID:	5127
Pathways:	Hormone Transport

Application Details

Application Notes:	Western Blot (1:1000) The optimal working dilution should be determined by the end user.
--------------------	---------------------------------------------------------------------------------------------

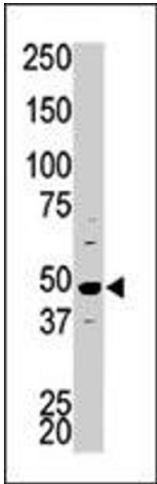
Restrictions:	For Research Use only
---------------	-----------------------

Handling

Format:	Liquid
Buffer:	In PBS (0.09 % sodium azide)
Preservative:	Sodium azide
Precaution of Use:	This product contains Sodium azide: a POISONOUS AND HAZARDOUS SUBSTANCE which should be handled by trained staff only.
Storage:	4 °C,-20 °C
Storage Comment:	Store at 4°C. For long term storage store at -20°C. Aliquot to avoid repeated freezing and thawing.

Publications

Product cited in:	Strausberg, Feingold, Grouse, Derge, Klausner, Collins, Wagner, Shenmen, Schuler, Altschul, Zeeberg, Buetow, Schaefer, Bhat, Hopkins, Jordan, Moore, Max, Wang, Hsieh, Diatchenko, Marusina, Farmer et al.: "Generation and initial analysis of more than 15,000 full-length human and mouse cDNA sequences. ..." in: Proceedings of the National Academy of Sciences of the United States of America , Vol. 99, Issue 26, pp. 16899-903, (2002) (PubMed).
-------------------	-------------------------------------------------------------------------------------------------------------------------------------------------------------------------------------------------------------------------------------------------------------------------------------------------------------------------------------------------------------------------------------------------------------------------------------------------------------------------------------



Western Blotting

Image 1. The PCTK1 polyclonal antibody is used in Western blot to detect PCTK1 in HepG2 cell lysate.