

Datasheet for ABIN543731

**anti-CAMK1 antibody (C-Term)**[2 Images](#)[2 Publications](#)[Go to Product page](#)

## Overview

Quantity:	400 µL
Target:	CAMK1
Binding Specificity:	C-Term
Reactivity:	Human, Mouse, Rat, Primate, Monkey
Host:	Rabbit
Clonality:	Polyclonal
Conjugate:	This CAMK1 antibody is un-conjugated
Application:	Western Blotting (WB)

## Product Details

Purpose:	Rabbit polyclonal antibody raised against synthetic peptide of CAMK1.
Immunogen:	A synthetic peptide (conjugated with KLH) corresponding to C-terminus of human CAMK1.
Cross-Reactivity:	Human, Monkey, Mouse, Primate, Rat

## Target Details

Target:	CAMK1
Alternative Name:	CAMK1 ( <a href="#">CAMK1 Products</a> )
Gene ID:	8536
Pathways:	<a href="#">Myometrial Relaxation and Contraction</a> , <a href="#">Regulation of Muscle Cell Differentiation</a> , <a href="#">Smooth Muscle Cell Migration</a>

## Application Details

Application Notes:	Western Blot (1:1000) Immunohistochemistry (1:50-100) The optimal working dilution should be determined by the end user.
--------------------	--

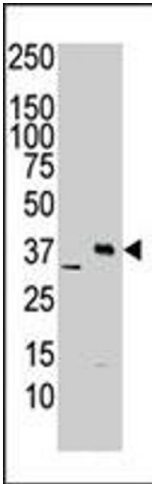
Restrictions:	For Research Use only
---------------	-----------------------

## Handling

Format:	Liquid
Buffer:	In PBS (0.09 % sodium azide)
Preservative:	Sodium azide
Precaution of Use:	This product contains Sodium azide: a POISONOUS AND HAZARDOUS SUBSTANCE which should be handled by trained staff only.
Storage:	4 °C,-20 °C
Storage Comment:	Store at 4°C. For long term storage store at -20°C. Aliquot to avoid repeated freezing and thawing.

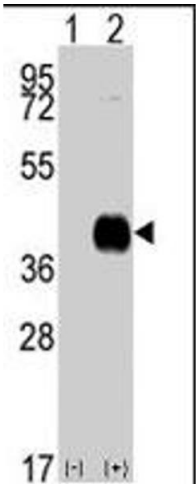
## Publications

Product cited in:	<p>von Roemeling, Radisky, Marlow, Cooper, Grebe, Anastasiadis, Tun, Copland: "Neuronal pentraxin 2 supports clear cell renal cell carcinoma by activating the AMPA-selective glutamate receptor-4." in: <b>Cancer research</b>, Vol. 74, Issue 17, pp. 4796-810, (2014) (<a href="#">PubMed</a>).</p> <p>Condon, Pezzi, Drummond, Yin, Rainey: "Calmodulin-dependent kinase I regulates adrenal cell expression of aldosterone synthase." in: <b>Endocrinology</b>, Vol. 143, Issue 9, pp. 3651-7, (2002) (<a href="#">PubMed</a>).</p>
-------------------	--



Western Blotting

**Image 1.** The CAMK1 polyclonal antibody is used in Western blot to detect CAMK1 in HeLa cell lysate (lane 1) and primate brain tissue lysate (lane 2) .



Western Blotting

**Image 2.** Western blot analysis of CAMK1 (arrow) using CAMK1 polyclonal antibody . 293 cell lysates (2 ug/lane) either nontransfected (Lane 1) or transiently transfected with the CAMK1 gene (Lane 2) (Origene Technologies).