

Datasheet for ABIN543735

**anti-CAMK2D antibody (C-Term)****2** Images**1** Publication[Go to Product page](#)

## Overview

|                      |  |
|----------------------|--|
| Quantity:            | 400 µL   |
| Target:              | CAMK2D   |
| Binding Specificity: | C-Term   |
| Reactivity:          | Human, Primate, Monkey   |
| Host:                | Rabbit   |
| Clonality:           | Polyclonal   |
| Conjugate:           | This CAMK2D antibody is un-conjugated  |
| Application:         | Western Blotting (WB), Immunohistochemistry (Paraffin-embedded Sections) (IHC (p)) |

## Product Details

|                   |  |
|-------------------|--|
| Purpose:          | Rabbit polyclonal antibody raised against synthetic peptide of CAMK2D.                 |
| Immunogen:        | A synthetic peptide (conjugated with KLH) corresponding to C-terminus of human CAMK2D. |
| Cross-Reactivity: | Human, Monkey, Primate   |

## Target Details

|                   |   |
|-------------------|---|
| Target:           | CAMK2D  |
| Alternative Name: | CAMK2D ( <a href="#">CAMK2D Products</a> )  |
| Gene ID:          | 817   |
| Pathways:         | <a href="#">WNT Signaling</a> , <a href="#">Interferon-gamma Pathway</a> , <a href="#">Myometrial Relaxation and Contraction</a> , <a href="#">Smooth Muscle Cell Migration</a> |

## Application Details

|                    |  |
|--------------------|--|
| Application Notes: | Western Blot (1:1000)<br>Immunohistochemistry (1:50-100)<br>The optimal working dilution should be determined by the end user. |
|--------------------|--|

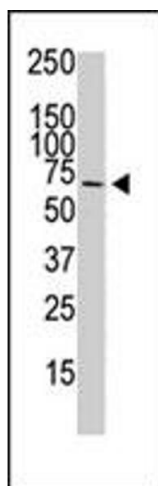
|               |                       |
|---------------|-----------------------|
| Restrictions: | For Research Use only |
|---------------|-----------------------|

## Handling

|                    |  |
|--------------------|--|
| Format:            | Liquid   |
| Buffer:            | In PBS (0.09 % sodium azide)   |
| Preservative:      | Sodium azide   |
| Precaution of Use: | This product contains Sodium azide: a POISONOUS AND HAZARDOUS SUBSTANCE which should be handled by trained staff only. |
| Storage:           | 4 °C,-20 °C  |
| Storage Comment:   | Store at 4°C. For long term storage store at -20°C.<br>Aliquot to avoid repeated freezing and thawing.                 |

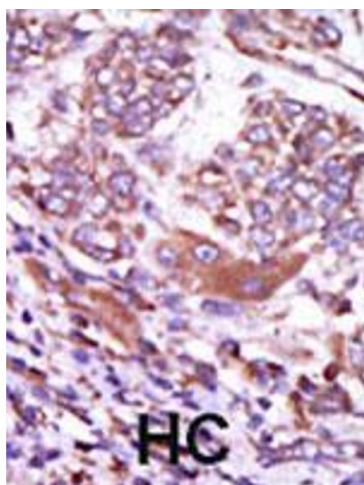
## Publications

|                   |   |
|-------------------|---|
| Product cited in: | Rochlitz, Voigt, Lankat-Buttgereit, Göke, Heimberg, Nauck, Schiemann, Schatz, Pfeiffer: "Cloning and quantitative determination of the human Ca <sup>2+</sup> /calmodulin-dependent protein kinase II (CaMK II) isoforms in human beta cells." in: <b>Diabetologia</b> , Vol. 43, Issue 4, pp. 465-73, (2000) ( <a href="#">PubMed</a> ). |
|-------------------|---|



### Western Blotting

**Image 1.** The CAMK2D polyclonal antibody is used in Western blot to detect CAMK2D in serum-starved HeLa cell lysate.



### Immunohistochemistry

**Image 2.** Formalin-fixed and paraffin-embedded human hepatocellular carcinoma tissue reacted with CAMK2D polyclonal antibody, which was peroxidase-conjugated to the secondary antibody, followed by AEC staining. This data demonstrates the use of this antibody for immunohistochemistry; clinical relevance has not been evaluated. HC = hepatocarcinoma.