

Datasheet for ABIN544042
anti-CDH15 antibody (C-Term)[2 Images](#)[3 Publications](#)[Go to Product page](#)

Overview

Quantity:	400 µL
Target:	CDH15
Binding Specificity:	C-Term
Reactivity:	Human
Host:	Rabbit
Clonality:	Polyclonal
Conjugate:	This CDH15 antibody is un-conjugated
Application:	Western Blotting (WB), Immunohistochemistry (Paraffin-embedded Sections) (IHC (p))

Product Details

Purpose:	Rabbit polyclonal antibody raised against synthetic peptide of CDH15.
Immunogen:	A synthetic peptide (conjugated with KLH) corresponding to C-terminus of human CDH15.
Cross-Reactivity:	Human

Target Details

Target:	CDH15
Alternative Name:	Cadherin-15 (CDH15 Products)
Gene ID:	1013

Application Details

Application Notes: Western Blot (1:1000)
Immunohistochemistry (1:10-50)
The optimal working dilution should be determined by the end user.

Restrictions: For Research Use only

Handling

Format: Liquid

Buffer: In PBS (0.09 % sodium azide)

Preservative: Sodium azide

Precaution of Use: This product contains Sodium azide: a POISONOUS AND HAZARDOUS SUBSTANCE which should be handled by trained staff only.

Storage: 4 °C,-20 °C

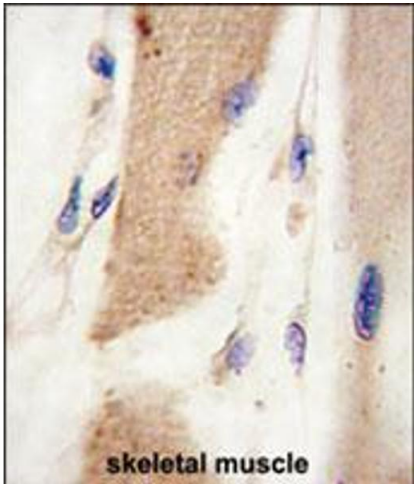
Storage Comment: Store at 4°C. For long term storage store at -20°C.
Aliquot to avoid repeated freezing and thawing.

Publications

Product cited in: Kang, Feinleib, Knox, Ketteringham, Krauss: "Promyogenic members of the Ig and cadherin families associate to positively regulate differentiation." in: **Proceedings of the National Academy of Sciences of the United States of America**, Vol. 100, Issue 7, pp. 3989-94, (2003) ([PubMed](#)).

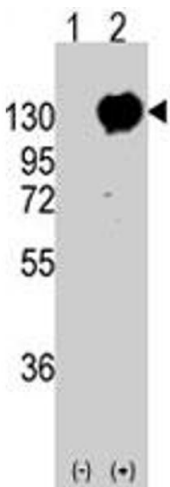
Hollnagel, Grund, Franke, Arnold: "The cell adhesion molecule M-cadherin is not essential for muscle development and regeneration." in: **Molecular and cellular biology**, Vol. 22, Issue 13, pp. 4760-70, (2002) ([PubMed](#)).

Meigs, Fields, McKee, Casey: "Interaction of Galpha 12 and Galpha 13 with the cytoplasmic domain of cadherin provides a mechanism for beta -catenin release." in: **Proceedings of the National Academy of Sciences of the United States of America**, Vol. 98, Issue 2, pp. 519-24, (2001) ([PubMed](#)).



Immunohistochemistry

Image 1. Formalin-fixed and paraffin-embedded human skeletal muscle tissue reacted with CDH15 polyclonal antibody , which was peroxidase-conjugated to the secondary antibody, followed by DAB staining. This data demonstrates the use of this antibody for immunohistochemistry; clinical relevance has not been evaluated.



Western Blotting

Image 2. Western blot analysis of CDH15 (arrow) using rabbit CDH15 polyclonal antibody . 293 cell lysates (2 ug/lane) either nontransfected (Lane 1) or transiently transfected with the CDH15 gene (Lane 2) (Origene Technologies).