

Datasheet for ABIN544059

anti-PSMA5 antibody (N-Term)**2** Images**3** Publications[Go to Product page](#)

Overview

Quantity:	400 µL
Target:	PSMA5
Binding Specificity:	N-Term
Reactivity:	Human
Host:	Rabbit
Clonality:	Polyclonal
Conjugate:	This PSMA5 antibody is un-conjugated
Application:	Western Blotting (WB), Immunohistochemistry (Paraffin-embedded Sections) (IHC (p))

Product Details

Purpose:	Rabbit polyclonal antibody raised against synthetic peptide of PSMA5.
Immunogen:	A synthetic peptide (conjugated with KLH) corresponding to N-terminus of human PSMA5.
Cross-Reactivity:	Human

Target Details

Target:	PSMA5
Alternative Name:	PSMA5 (PSMA5 Products)
Gene ID:	5686
Pathways:	Mitotic G1-G1/S Phases , DNA Replication , Synthesis of DNA

Application Details

Application Notes:	Western Blot (1:1000) Immunohistochemistry (1:50) The optimal working dilution should be determined by the end user.
--------------------	--

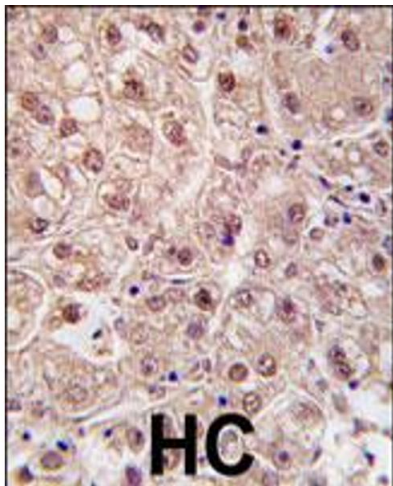
Restrictions:	For Research Use only
---------------	-----------------------

Handling

Format:	Liquid
Buffer:	In PBS (0.09 % sodium azide)
Preservative:	Sodium azide
Precaution of Use:	This product contains Sodium azide: a POISONOUS AND HAZARDOUS SUBSTANCE which should be handled by trained staff only.
Storage:	4 °C,-20 °C
Storage Comment:	Store at 4°C. For long term storage store at -20°C. Aliquot to avoid repeated freezing and thawing.

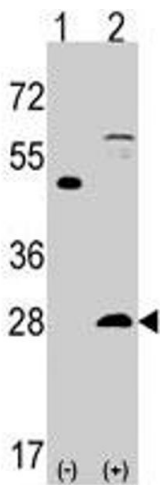
Publications

Product cited in:	Beausoleil, Villén, Gerber, Rush, Gygi: "A probability-based approach for high-throughput protein phosphorylation analysis and site localization." in: Nature biotechnology , Vol. 24, Issue 10, pp. 1285-92, (2006) (PubMed).
	Gregory, Barlow, McLay, Kaul, Swarbreck, Dunham, Scott, Howe, Woodfine, Spencer, Jones, Gillson, Searle, Zhou, Kokocinski, McDonald, Evans, Phillips, Atkinson, Cooper, Jones, Hall, Andrews, Lloyd et al.: "The DNA sequence and biological annotation of human chromosome 1. ..." in: Nature , Vol. 441, Issue 7091, pp. 315-21, (2006) (PubMed).
	Beausoleil, Jedrychowski, Schwartz, Elias, Villén, Li, Cohn, Cantley, Gygi: "Large-scale characterization of HeLa cell nuclear phosphoproteins." in: Proceedings of the National Academy of Sciences of the United States of America , Vol. 101, Issue 33, pp. 12130-5, (2004) (PubMed).



Immunohistochemistry

Image 1. Formalin-fixed and paraffin-embedded human hepatocellular carcinoma reacted with PSMA5 polyclonal antibody , which was peroxidase-conjugated to the secondary antibody, followed by DAB staining. This data demonstrates the use of this antibody for immunohistochemistry; clinical relevance has not been evaluated.



Western Blotting

Image 2. Western blot analysis of PSMA5 (arrow) using rabbit PSMA5 polyclonal antibody . 293 cell lysates (2 ug/lane) either nontransfected (Lane 1) or transiently transfected with the PSMA5 gene (Lane 2) (Origene Technologies).