

Datasheet for ABIN544074
anti-MIPEP antibody (N-Term)[Go to Product page](#)

2 Images

Overview

Quantity:	400 µL
Target:	MIPEP
Binding Specificity:	N-Term
Reactivity:	Human
Host:	Rabbit
Clonality:	Polyclonal
Conjugate:	This MIPEP antibody is un-conjugated
Application:	Western Blotting (WB), Immunohistochemistry (Paraffin-embedded Sections) (IHC (p))

Product Details

Purpose:	Rabbit polyclonal antibody raised against synthetic peptide of MIPEP.
Immunogen:	A synthetic peptide (conjugated with KLH) corresponding to N-terminus of human MIPEP.
Cross-Reactivity:	Human

Target Details

Target:	MIPEP
Alternative Name:	MIPEP (MIPEP Products)
Gene ID:	4285

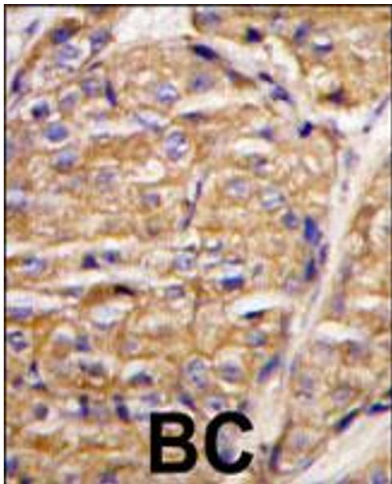
Application Details

Application Notes:	Western Blot (1:1000) Immunohistochemistry (1:10-50) The optimal working dilution should be determined by the end user.
Restrictions:	For Research Use only

Handling

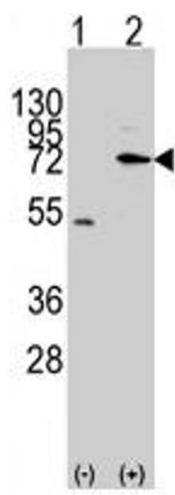
Format:	Liquid
Buffer:	In PBS (0.09 % sodium azide)
Preservative:	Sodium azide
Precaution of Use:	This product contains Sodium azide: a POISONOUS AND HAZARDOUS SUBSTANCE which should be handled by trained staff only.
Storage:	4 °C,-20 °C
Storage Comment:	Store at 4°C. For long term storage store at -20°C. Aliquot to avoid repeated freezing and thawing.

Images



Immunohistochemistry

Image 1. Formalin-fixed and paraffin-embedded human breast carcinoma tissue reacted with MIPEP polyclonal antibody , which was peroxidase-conjugated to the secondary antibody, followed by DAB staining. This data demonstrates the use of this antibody for immunohistochemistry; clinical relevance has not been evaluated.



Western Blotting

Image 2. Western blot analysis of MIPEP (arrow) using rabbit MIPEP polyclonal antibody . 293 cell lysates (2 ug/lane) either nontransfected (Lane 1) or transiently transfected with the MIPEP gene (Lane 2) (Origene Technologies).