

Datasheet for ABIN544087

anti-ALDH6A1 antibody (N-Term)

3 Images

3 Publications

[Go to Product page](#)

Overview

Quantity:	400 µL
Target:	ALDH6A1
Binding Specificity:	N-Term
Reactivity:	Human
Host:	Rabbit
Clonality:	Polyclonal
Conjugate:	This ALDH6A1 antibody is un-conjugated
Application:	Western Blotting (WB), Flow Cytometry (FACS), Immunohistochemistry (Paraffin-embedded Sections) (IHC (p))

Product Details

Purpose:	Rabbit polyclonal antibody raised against synthetic peptide of ALDH6A1.
Immunogen:	A synthetic peptide (conjugated with KLH) corresponding to N-terminus of human ALDH6A1.
Cross-Reactivity:	Human

Target Details

Target:	ALDH6A1
Alternative Name:	ALDH6A1 / MMSDH (ALDH6A1 Products)
Gene ID:	4329
Pathways:	Brown Fat Cell Differentiation

Application Details

Application Notes:	Western Blot (1:1000) Immunohistochemistry (1:10-50) Flow cytometry (1:10-50) The optimal working dilution should be determined by the end user.
--------------------	---

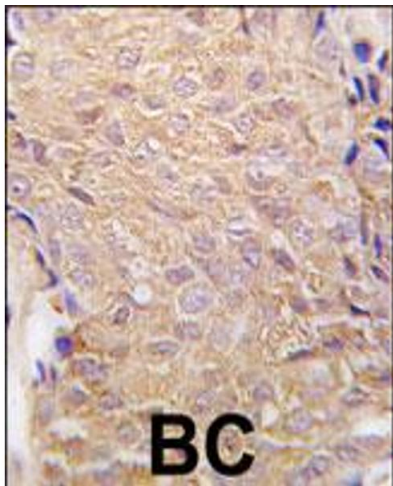
Restrictions:	For Research Use only
---------------	-----------------------

Handling

Format:	Liquid
Buffer:	In PBS (0.09 % sodium azide)
Preservative:	Sodium azide
Precaution of Use:	This product contains Sodium azide: a POISONOUS AND HAZARDOUS SUBSTANCE which should be handled by trained staff only.
Storage:	4 °C, -20 °C
Storage Comment:	Store at 4°C. For long term storage store at -20°C. Aliquot to avoid repeated freezing and thawing.

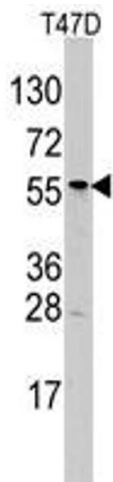
Publications

Product cited in:	Kuiper, Williams, Distl, Drögemüller: "Assignment of the PAX6 gene to bovine chromosome 15q25-->q27 by fluorescence in situ hybridization and confirmation by radiation hybrid mapping." in: Cytogenetic and genome research , Vol. 109, Issue 4, pp. 533, (2005) (PubMed).
	Anderson, Polanski, Pieper, Gatlin, Tirumalai, Conrads, Veenstra, Adkins, Pounds, Fagan, Lobley: "The human plasma proteome: a nonredundant list developed by combination of four separate sources." in: Molecular & cellular proteomics : MCP , Vol. 3, Issue 4, pp. 311-26, (2004) (PubMed).
	Chambliss, Gray, Rylance, Pollitt, Gibson: "Molecular characterization of methylmalonate semialdehyde dehydrogenase deficiency." in: Journal of inherited metabolic disease , Vol. 23, Issue 5, pp. 497-504, (2000) (PubMed).



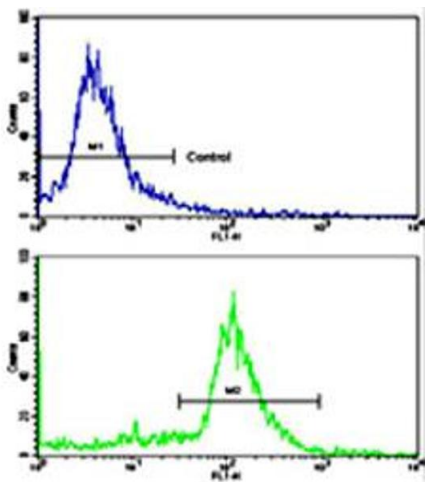
Immunohistochemistry

Image 1. Formalin-fixed and paraffin-embedded human breast carcinoma tissue reacted with ALDH6A1 polyclonal antibody , which was peroxidase-conjugated to the secondary antibody, followed by DAB staining. This data demonstrates the use of this antibody for immunohistochemistry; clinical relevance has not been evaluated.



Western Blotting

Image 2. Western blot analysis of ALDH6A1 polyclonal antibody in T-47D cell line lysates (35 ug/lane). ALDH6A1 (arrow) was detected using the purified polyclonal antibody.



Flow Cytometry

Image 3. Flow cytometric analysis of ATDC5 cells using ALDH6A1 polyclonal antibody (bottom histogram) compared to a negative control cell (top histogram). FITC-conjugated goat-anti-rabbit secondary antibodies were used for the analysis.