

Datasheet for ABIN544089
anti-ERAS antibody (N-Term)[Go to Product page](#)

4 Images

2 Publications

Overview

Quantity:	400 µL
Target:	ERAS
Binding Specificity:	N-Term
Reactivity:	Human
Host:	Rabbit
Clonality:	Polyclonal
Conjugate:	This ERAS antibody is un-conjugated
Application:	Western Blotting (WB), Immunofluorescence (IF), Flow Cytometry (FACS), Immunohistochemistry (Paraffin-embedded Sections) (IHC (p))

Product Details

Purpose:	Rabbit polyclonal antibody raised against synthetic peptide of ERAS.
Immunogen:	A synthetic peptide (conjugated with KLH) corresponding to N-terminus of human ERAS.
Cross-Reactivity:	Human

Target Details

Target:	ERAS
Alternative Name:	ERAS / HRAS2 (ERAS Products)
Gene ID:	3266

Application Details

Application Notes:	Western Blot (1:1000) Immunofluorescence (1:10-50) Immunohistochemistry (1:50) Flow cytometry (1:10-50) The optimal working dilution should be determined by the end user.
--------------------	--

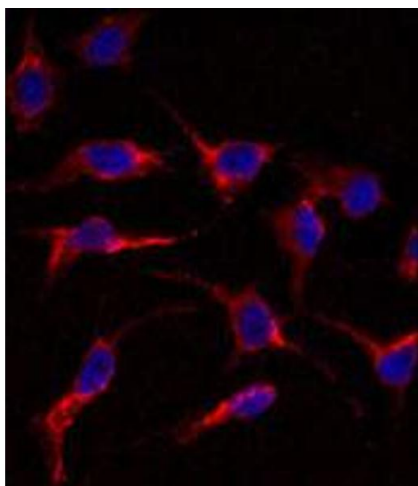
Restrictions:	For Research Use only
---------------	-----------------------

Handling

Format:	Liquid
Buffer:	In PBS (0.09 % sodium azide)
Preservative:	Sodium azide
Precaution of Use:	This product contains Sodium azide: a POISONOUS AND HAZARDOUS SUBSTANCE which should be handled by trained staff only.
Storage:	4 °C,-20 °C
Storage Comment:	Store at 4°C. For long term storage store at -20°C. Aliquot to avoid repeated freezing and thawing.

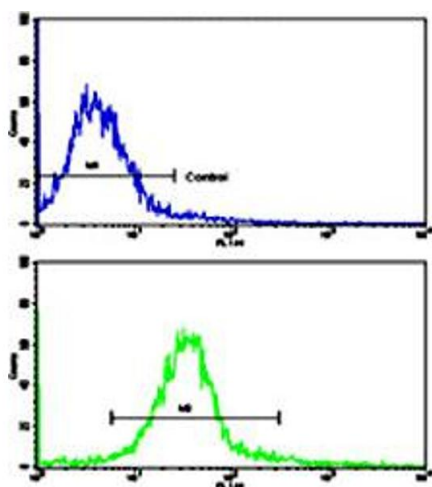
Publications

Product cited in:	Kameda, Thomson: "Human ERas gene has an upstream premature polyadenylation signal that results in a truncated, noncoding transcript." in: Stem cells (Dayton, Ohio) , Vol. 23, Issue 10, pp. 1535-40, (2005) (PubMed).
	Takahashi, Mitsui, Yamanaka: "Role of ERas in promoting tumour-like properties in mouse embryonic stem cells." in: Nature , Vol. 423, Issue 6939, pp. 541-5, (2003) (PubMed).



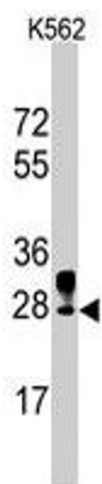
Immunofluorescence

Image 1. Immunofluorescence analysis of ERAS polyclonal antibody in HeLa cells. Primary antibody was followed by Alexa-Fluor-546-conjugated donkey anti-rabbit IgG (H+L). Alexa-Fluor-546 emits orange fluorescence. Blue counterstaining is DAPI.



Flow Cytometry

Image 2. Flow cytometric analysis of HeLa cells using ERAS polyclonal antibody (bottom histogram) compared to a negative control cell (top histogram). FITC-conjugated goat-anti-rabbit secondary antibodies were used for the analysis.



Western Blotting

Image 3. Western blot analysis of ERAS polyclonal antibody in K-562 cell line lysates (35 ug/lane). ERAS (arrow) was detected using the purified polyclonal antibody.

Please check the [product details page](#) for more images. Overall 4 images are available for ABIN544089.