



[Go to Product page](#)

Datasheet for ABIN544113

## anti-LIN28B antibody (C-Term)

2 Images

1 Publication

### Overview

Quantity:	400 µL
Target:	LIN28B
Binding Specificity:	C-Term
Reactivity:	Human
Host:	Rabbit
Clonality:	Polyclonal
Conjugate:	This LIN28B antibody is un-conjugated
Application:	Western Blotting (WB), Flow Cytometry (FACS)

### Product Details

Purpose:	Rabbit polyclonal antibody raised against synthetic peptide of LIN28B.
Immunogen:	A synthetic peptide (conjugated with KLH) corresponding to C-terminus of human LIN28B.
Cross-Reactivity:	Human

### Target Details

Target:	LIN28B
Alternative Name:	LIN28B ( <a href="#">LIN28B Products</a> )
Gene ID:	389421

## Application Details

Application Notes: Western Blot (1:1000)  
Flow cytometry (1:10-50)  
The optimal working dilution should be determined by the end user.

Restrictions: For Research Use only

## Handling

Format: Liquid

Buffer: In PBS (0.09 % sodium azide)

Preservative: Sodium azide

Precaution of Use: This product contains Sodium azide: a POISONOUS AND HAZARDOUS SUBSTANCE which should be handled by trained staff only.

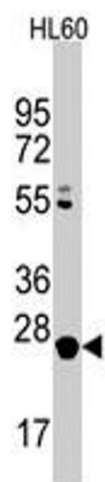
Storage: 4 °C,-20 °C

Storage Comment: Store at 4°C. For long term storage store at -20°C.  
Aliquot to avoid repeated freezing and thawing.

## Publications

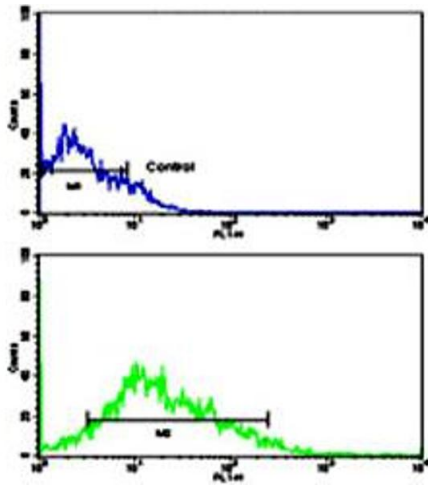
Product cited in: Guo, Chen, Ito, Watanabe, Ge, Kodama, Aburatani: "Identification and characterization of lin-28 homolog B (LIN28B) in human hepatocellular carcinoma." in: **Gene**, Vol. 384, pp. 51-61, (2006) ([PubMed](#)).

## Images



### Western Blotting

**Image 1.** Western blot analysis of LIN28B polyclonal antibody in HL-60 cell line lysates (35 ug/lane). LIN28B (arrow) was detected using the purified polyclonal antibody.



### Flow Cytometry

**Image 2.** Flow cytometric analysis of HL-60 cells using LIN28B polyclonal antibody (bottom histogram) compared to a negative control cell (top histogram). FITC-conjugated goat-anti-rabbit secondary antibodies were used for the analysis.