

Datasheet for ABIN544207

**anti-TRPM7 antibody (AA 1821-1850)**[2 Images](#)[3 Publications](#)[Go to Product page](#)

## Overview

Quantity:	400 µL
Target:	TRPM7
Binding Specificity:	AA 1821-1850
Reactivity:	Human
Host:	Rabbit
Clonality:	Polyclonal
Conjugate:	This TRPM7 antibody is un-conjugated
Application:	Western Blotting (WB), ELISA, Immunohistochemistry (Paraffin-embedded Sections) (IHC (p))

## Product Details

Purpose:	Rabbit polyclonal antibody raised against synthetic peptide of TRPM7.
Immunogen:	A synthetic peptide (conjugated with KLH) corresponding to amino acids 1821-1850 of human TRPM7.
Cross-Reactivity:	Human

## Target Details

Target:	TRPM7
Alternative Name:	TRPM7 ( <a href="#">TRPM7 Products</a> )
Gene ID:	54822

## Application Details

Application Notes: Immunohistochemistry (Formalin/PFA-fixed paraffin-embedded sections) (1:50-100)  
The optimal working dilution should be determined by the end user.

Restrictions: For Research Use only

## Handling

Format: Liquid

Buffer: In PBS (0.09 % sodium azide).

Preservative: Sodium azide

Precaution of Use: This product contains Sodium azide: a POISONOUS AND HAZARDOUS SUBSTANCE which should be handled by trained staff only.

Storage: 4 °C, -20 °C

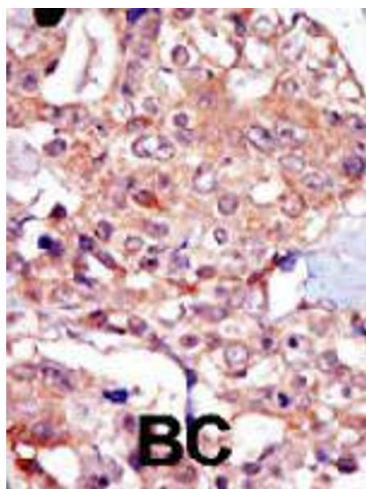
Storage Comment: Store at 4°C for up to 2 weeks. For long term storage, store at -20°C.  
Aliquot to avoid repeated freezing and thawing.

## Publications

Product cited in: Cantrell: "Phosphoinositide 3-kinase signalling pathways." in: **Journal of cell science**, Vol. 114, Issue Pt 8, pp. 1439-45, (2001) ([PubMed](#)).

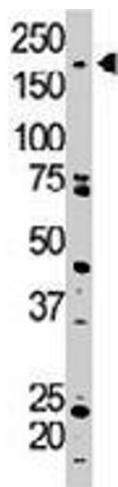
Blume-Jensen, Hunter: "Oncogenic kinase signalling." in: **Nature**, Vol. 411, Issue 6835, pp. 355-65, (2001) ([PubMed](#)).

Jhiang: "The RET proto-oncogene in human cancers." in: **Oncogene**, Vol. 19, Issue 49, pp. 5590-7, (2000) ([PubMed](#)).



#### Immunohistochemistry

**Image 1.** Formalin-fixed and paraffin-embedded human cancer tissue reacted with TRPM7 polyclonal antibody , which was peroxidase-conjugated to the secondary antibody, followed by DAB staining. This data demonstrates the use of this antibody for immunohistochemistry; clinical relevance has not been evaluated. BC = breast carcinoma.



#### Western Blotting

**Image 2.** The TRPM7 polyclonal antibody is used in Western blot to detect TRPM7 in 293 cell lysate.