



Datasheet for ABIN544228  
**anti-CDR2 antibody (N-Term)**



[Go to Product page](#)

2 Images

3 Publications

### Overview

Quantity:	400 µL
Target:	CDR2
Binding Specificity:	N-Term
Reactivity:	Human
Host:	Rabbit
Clonality:	Polyclonal
Conjugate:	This CDR2 antibody is un-conjugated
Application:	Western Blotting (WB), Immunohistochemistry (Paraffin-embedded Sections) (IHC (p))

### Product Details

Purpose:	Rabbit polyclonal antibody raised against synthetic peptide of GNB2L1.
Immunogen:	A synthetic peptide (conjugated with KLH) corresponding to N-terminus of human GNB2L1.
Cross-Reactivity:	Human

### Target Details

Target:	CDR2
Alternative Name:	CDR2 ( <a href="#">CDR2 Products</a> )
Gene ID:	1039

## Application Details

---

Application Notes: Immunohistochemistry (Formalin/PFA-fixed paraffin-embedded sections) (1:50-100)  
Western Blot (1:1000)  
The optimal working dilution should be determined by the end user.

---

Restrictions: For Research Use only

---

## Handling

---

Format: Liquid

---

Buffer: In PBS (0.09 % sodium azide)

---

Preservative: Sodium azide

---

Precaution of Use: This product contains Sodium azide: a POISONOUS AND HAZARDOUS SUBSTANCE which should be handled by trained staff only.

---

Storage: 4 °C,-20 °C

---

Storage Comment: Store at 4°C. For long term storage store at -20°C.  
Aliquot to avoid repeated freezing and thawing.

---

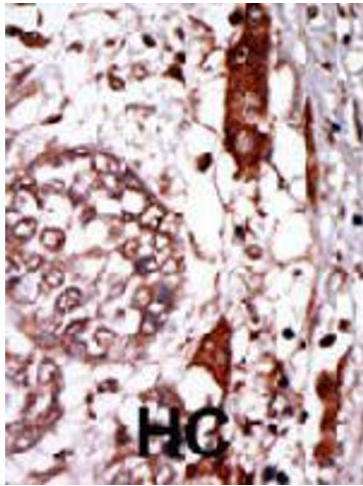
## Publications

---

Product cited in: Usacheva, Tian, Sandoval, Salvi, Levy, Colamonici: "The WD motif-containing protein RACK-1 functions as a scaffold protein within the type I IFN receptor-signaling complex." in: **Journal of immunology (Baltimore, Md. : 1950)**, Vol. 171, Issue 6, pp. 2989-94, (2003) ([PubMed](#)).

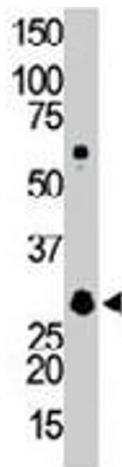
Ceci, Gaviraghi, Gorrini, Sala, Offenhäuser, Marchisio, Biffo: "Release of eIF6 (p27BBP) from the 60S subunit allows 80S ribosome assembly." in: **Nature**, Vol. 426, Issue 6966, pp. 579-84, (2003) ([PubMed](#)).

Kiely, Sant, OConnor: "RACK1 is an insulin-like growth factor 1 (IGF-1) receptor-interacting protein that can regulate IGF-1-mediated Akt activation and protection from cell death." in: **The Journal of biological chemistry**, Vol. 277, Issue 25, pp. 22581-9, (2002) ([PubMed](#)).



### Immunohistochemistry

**Image 1.** Formalin-fixed and paraffin-embedded human hepatocellular carcinoma tissue reacted with GNB2L1 polyclonal antibody, which was peroxidase-conjugated to the secondary antibody, followed by AEC staining. This data demonstrates the use of this antibody for immunohistochemistry; clinical relevance has not been evaluated. HC = hepatocarcinoma.



### Western Blotting

**Image 2.** The GNB2L1 polyclonal antibody is used in Western blot to detect GNB2L1 in Ramos cell lysate.