



[Go to Product page](#)

Datasheet for ABIN544308
anti-DGKA antibody (C-Term)

2 Images

Overview

Quantity:	400 µL
Target:	DGKA
Binding Specificity:	C-Term
Reactivity:	Human
Host:	Rabbit
Clonality:	Polyclonal
Conjugate:	This DGKA antibody is un-conjugated
Application:	Western Blotting (WB), Immunohistochemistry (Paraffin-embedded Sections) (IHC (p))

Product Details

Purpose:	Rabbit polyclonal antibody raised against synthetic peptide of DGKA.
Immunogen:	A synthetic peptide (conjugated with KLH) corresponding to C-terminus of human DGKA.
Cross-Reactivity:	Human

Target Details

Target:	DGKA
Alternative Name:	DAG kinase alpha (DGKA Products)
Gene ID:	1606

Application Details

Application Notes: Immunohistochemistry (Formalin/PFA-fixed paraffin-embedded sections) (1:50-100)
Western Blot (1:1000)
The optimal working dilution should be determined by the end user.

Restrictions: For Research Use only

Handling

Format: Liquid

Buffer: In PBS (0.09 % sodium azide)

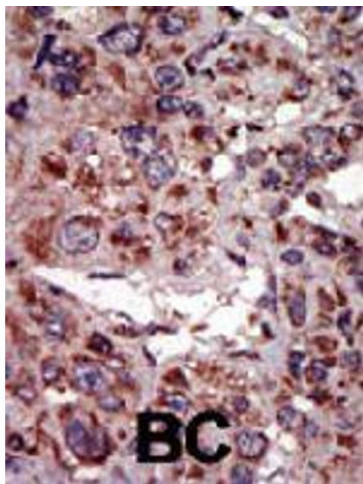
Preservative: Sodium azide

Precaution of Use: This product contains Sodium azide: a POISONOUS AND HAZARDOUS SUBSTANCE which should be handled by trained staff only.

Storage: 4 °C,-20 °C

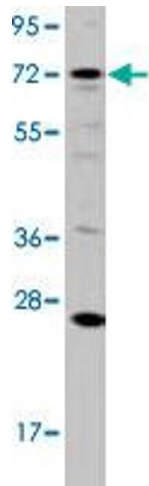
Storage Comment: Store at 4°C. For long term storage store at -20°C.
Aliquot to avoid repeated freezing and thawing.

Images



Immunohistochemistry

Image 1. Formalin-fixed and paraffin-embedded human cancer tissue reacted with DGKA polyclonal antibody, which was peroxidase-conjugated to the secondary antibody, followed by AEC staining. This data demonstrates the use of this antibody for immunohistochemistry; clinical relevance has not been evaluated. BC = breast carcinoma.



Western Blotting

Image 2. Western blot analysis of HL-60 cell lysate (35 ug/lane) with DGKA polyclonal antibody .