

Datasheet for ABIN544310

anti-Cytidine Monophosphate (UMP-CMP) Kinase 1, Cytosolic (CMPK1) (C-Term) antibody[Go to Product page](#)

2 Images

2 Publications

Overview

Quantity:	400 µL
Target:	Cytidine Monophosphate (UMP-CMP) Kinase 1, Cytosolic (CMPK1)
Binding Specificity:	C-Term
Reactivity:	Human, Mouse
Host:	Rabbit
Clonality:	Polyclonal
Conjugate:	Un-conjugated
Application:	Western Blotting (WB), Immunohistochemistry (Paraffin-embedded Sections) (IHC (p))

Product Details

Purpose:	Rabbit polyclonal antibody raised against synthetic peptide of CMPK1.
Immunogen:	A synthetic peptide (conjugated with KLH) corresponding to C-terminus of human CMPK1.
Cross-Reactivity:	Human, Mouse

Target Details

Target:	Cytidine Monophosphate (UMP-CMP) Kinase 1, Cytosolic (CMPK1)
Alternative Name:	CMPK1 (CMPK1 Products)
Gene ID:	51727
Pathways:	Nucleotide Phosphorylation , Ribonucleoside Biosynthetic Process

Application Details

Application Notes: Immunohistochemistry (Formalin/PFA-fixed paraffin-embedded sections) (1:50-100)
Western Blot (1:1000)
The optimal working dilution should be determined by the end user.

Restrictions: For Research Use only

Handling

Format: Liquid

Buffer: In PBS (0.09 % sodium azide)

Preservative: Sodium azide

Precaution of Use: This product contains Sodium azide: a POISONOUS AND HAZARDOUS SUBSTANCE which should be handled by trained staff only.

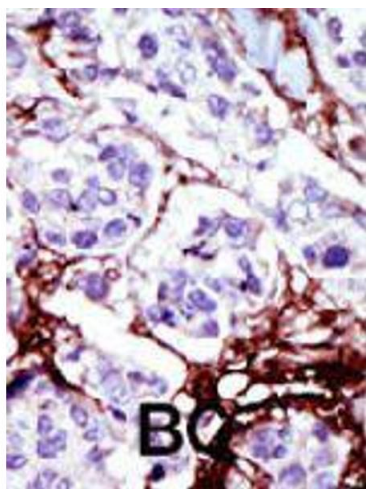
Storage: 4 °C,-20 °C

Storage Comment: Store at 4°C. For long term storage store at -20°C.
Aliquot to avoid repeated freezing and thawing.

Publications

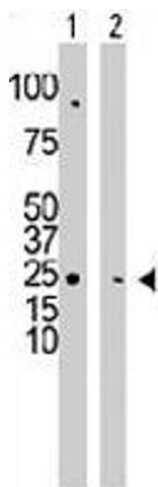
Product cited in: Strausberg, Feingold, Grouse, Derge, Klausner, Collins, Wagner, Shenmen, Schuler, Altschul, Zeeberg, Buetow, Schaefer, Bhat, Hopkins, Jordan, Moore, Max, Wang, Hsieh, Diatchenko, Marusina, Farmer et al.: "Generation and initial analysis of more than 15,000 full-length human and mouse cDNA sequences. ..." in: **Proceedings of the National Academy of Sciences of the United States of America**, Vol. 99, Issue 26, pp. 16899-903, (2002) ([PubMed](#)).

Hu, Han, Song, Peng, Huang, Ren, Gu, Huang, Li, Jiang, Fu, Zhang, Gu, Dai, Mao, Gao, Rong, Ye, Zhou, Xu, Gu, Shi, Jin, Zhang, Wu, Huang, Chen, Chen, Chen: "Gene expression profiling in the human hypothalamus-pituitary-adrenal axis and full-length cDNA cloning." in: **Proceedings of the National Academy of Sciences of the United States of America**, Vol. 97, Issue 17, pp. 9543-8, (2000) ([PubMed](#)).



Immunohistochemistry

Image 1. Formalin-fixed and paraffin-embedded human cancer tissue reacted with CMPK1 polyclonal antibody , which was peroxidase-conjugated to the secondary antibody, followed by AEC staining. This data demonstrates the use of this antibody for immunohistochemistry ; clinical relevance has not been evaluated. BC = breast carcinoma.



Western Blotting

Image 2. The CMPK1 polyclonal antibody is used in Western blot to detect CMPK1 in HepG2 cell lysate (Lane 1) and mouse cerebellum tissue lysate (Lane 2) .