

Datasheet for ABIN544316
anti-INSRR antibody (C-Term)[Go to Product page](#)

1 Image

1 Publication

Overview

Quantity:	400 µL
Target:	INSRR
Binding Specificity:	C-Term
Reactivity:	Human
Host:	Rabbit
Clonality:	Polyclonal
Conjugate:	This INSRR antibody is un-conjugated
Application:	Western Blotting (WB), Immunohistochemistry (Paraffin-embedded Sections) (IHC (p))

Product Details

Purpose:	Rabbit polyclonal antibody raised against synthetic peptide of INSRR.
Immunogen:	A synthetic peptide (conjugated with KLH) corresponding to C-terminus of human INSRR.
Cross-Reactivity:	Human

Target Details

Target:	INSRR
Alternative Name:	INSRR / IRR (INSRR Products)
Gene ID:	3645
Pathways:	RTK Signaling

Application Details

Application Notes:	Immunohistochemistry (Formalin/PFA-fixed paraffin-embedded sections) (1:50-100) Western Blot (1:1000) The optimal working dilution should be determined by the end user.
--------------------	--

Restrictions:	For Research Use only
---------------	-----------------------

Handling

Format:	Liquid
---------	--------

Buffer:	In PBS (0.09 % sodium azide)
---------	------------------------------

Preservative:	Sodium azide
---------------	--------------

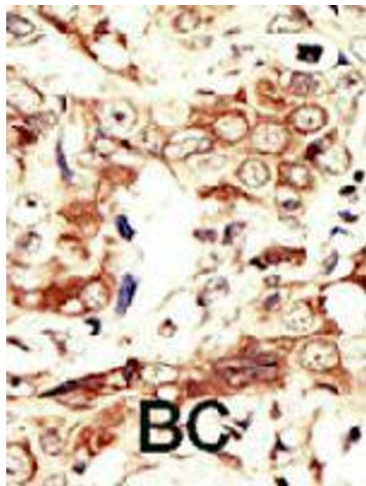
Precaution of Use:	This product contains Sodium azide: a POISONOUS AND HAZARDOUS SUBSTANCE which should be handled by trained staff only.
--------------------	--

Storage:	4 °C,-20 °C
----------	-------------

Storage Comment:	Store at 4°C. For long term storage store at -20°C. Aliquot to avoid repeated freezing and thawing.
------------------	--

Publications

Product cited in:	Whitmore, Maurer, Day, Jelmborg, Dasovich, Sundborg, Burkhead, Heipel, Madden, Kramer, Kuijper, Xu, Jaspers, Holly, Lok: "The assignment of the human insulin receptor-related receptor gene (INSRR) to chromosome 1q21-->q23 by the use of radiation hybrid mapping." in: Cytogenetics and cell genetics , Vol. 87, Issue 1-2, pp. 93-4, (2000) (PubMed).
-------------------	---



Immunohistochemistry

Image 1. Formalin-fixed and paraffin-embedded human cancer tissue reacted with INSRR polyclonal antibody , which was peroxidase-conjugated to the secondary antibody, followed by AEC staining. This data demonstrates the use of this antibody for immunohistochemistry ; clinical relevance has not been evaluated. BC = breast carcinoma.