

Datasheet for ABIN544346  
**anti-RYK antibody (AA 150-200)**[Go to Product page](#)

## 2 Images

## Overview

Quantity:	400 µL
Target:	RYK
Binding Specificity:	AA 150-200
Reactivity:	Human, Mouse, Rat
Host:	Rabbit
Clonality:	Polyclonal
Conjugate:	This RYK antibody is un-conjugated
Application:	Western Blotting (WB), Immunohistochemistry (Paraffin-embedded Sections) (IHC (p))

## Product Details

Purpose:	Rabbit polyclonal antibody raised against synthetic peptide of RYK.
Immunogen:	A synthetic peptide (conjugated with KLH) corresponding to amino acids 150-200 of human RYK.
Cross-Reactivity:	Human, Mouse, Rat

## Target Details

Target:	RYK
Alternative Name:	Tyrosine-protein kinase RYK ( <a href="#">RYK Products</a> )
Gene ID:	6259
Pathways:	<a href="#">RTK Signaling</a> , <a href="#">WNT Signaling</a> , <a href="#">Regulation of Cell Size</a>

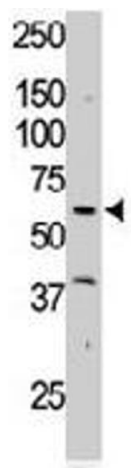
## Application Details

Application Notes:	Immunohistochemistry (Formalin/PFA-fixed paraffin-embedded sections) (1:50-100) Western Blot (1:1000) The optimal working dilution should be determined by the end user.
Restrictions:	For Research Use only

## Handling

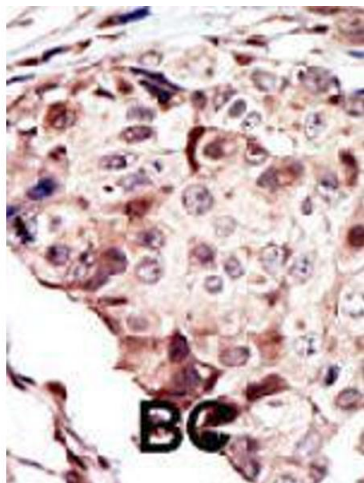
Format:	Liquid
Buffer:	In PBS (0.09 % sodium azide)
Preservative:	Sodium azide
Precaution of Use:	This product contains Sodium azide: a POISONOUS AND HAZARDOUS SUBSTANCE which should be handled by trained staff only.
Storage:	4 °C,-20 °C
Storage Comment:	Store at 4°C. For long term storage store at -20°C. Aliquot to avoid repeated freezing and thawing.

## Images



### Western Blotting

**Image 1.** The RYK polyclonal antibody is used in Western blot to detect RYK in Jurkat cell lysate.



#### Immunohistochemistry

**Image 2.** Formalin-fixed and paraffin-embedded human cancer tissue reacted with RYK polyclonal antibody , which was peroxidase-conjugated to the secondary antibody, followed by AEC staining. This data demonstrates the use of this antibody for immunohistochemistry ; clinical relevance has not been evaluated. BC = breast carcinoma.