



Datasheet for ABIN544381
anti-FER antibody (AA 789-818)



[Go to Product page](#)

1 Image

1 Publication

Overview

Quantity:	400 µL
Target:	FER
Binding Specificity:	AA 789-818
Reactivity:	Human
Host:	Rabbit
Clonality:	Polyclonal
Conjugate:	This FER antibody is un-conjugated
Application:	Western Blotting (WB), Immunofluorescence (IF), Immunohistochemistry (Paraffin-embedded Sections) (IHC (p)), Flow Cytometry (FACS)

Product Details

Purpose:	Rabbit polyclonal antibody raised against synthetic peptide of FER.
Immunogen:	A synthetic peptide (conjugated with KLH) corresponding to amino acids 789-818 at C-terminus of human FER.
Cross-Reactivity:	Human

Target Details

Target:	FER
Alternative Name:	FER / TYK3 (FER Products)
Gene ID:	2241

Application Details

Application Notes: Flow Cytometry (1:10-50)
Immunofluorescence (1:10-50)
Immunohistochemistry (Formalin/PFA-fixed paraffin-embedded sections) (1:10-50)
Western Blot (1:1000)
The optimal working dilution should be determined by the end user.

Restrictions: For Research Use only

Handling

Format: Liquid

Buffer: In PBS (0.09 % sodium azide)

Preservative: Sodium azide

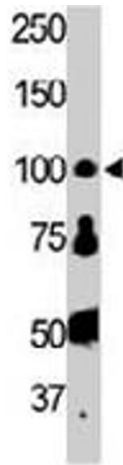
Precaution of Use: This product contains Sodium azide: a POISONOUS AND HAZARDOUS SUBSTANCE which should be handled by trained staff only.

Storage: 4 °C,-20 °C

Storage Comment: Store at 4°C. For long term storage store at -20°C.
Aliquot to avoid repeated freezing and thawing.

Publications

Product cited in: Greer: "Closing in on the biological functions of Fps/Fes and Fer." in: **Nature reviews. Molecular cell biology**, Vol. 3, Issue 4, pp. 278-89, (2002) ([PubMed](#)).



Western Blotting

Image 1. The FER polyclonal antibody is used in Western blot to detect FER in HL-60 cell lysate.