

Datasheet for ABIN544497  
**anti-P-Cadherin antibody (C-Term)**[3 Images](#)[2 Publications](#)[Go to Product page](#)

## Overview

Quantity:	400 µL
Target:	P-Cadherin (CDH3)
Binding Specificity:	C-Term
Reactivity:	Human
Host:	Rabbit
Clonality:	Polyclonal
Conjugate:	This P-Cadherin antibody is un-conjugated
Application:	Western Blotting (WB), Immunohistochemistry (Paraffin-embedded Sections) (IHC (p))

## Product Details

Purpose:	Rabbit polyclonal antibody raised against synthetic peptide of CDH3.
Immunogen:	A synthetic peptide (conjugated with KLH) corresponding to C-terminus of human CDH3.
Cross-Reactivity:	Human

## Target Details

Target:	P-Cadherin (CDH3)
Alternative Name:	Cadherin-3 ( <a href="#">CDH3 Products</a> )
Gene ID:	1001

## Application Details

Application Notes: Immunohistochemistry (Formalin/PFA-fixed paraffin-embedded sections) (1:10-50)  
Western Blot (1:1000)  
The optimal working dilution should be determined by the end user.

Restrictions: For Research Use only

## Handling

Format: Liquid

Buffer: In PBS (0.09 % sodium azide)

Preservative: Sodium azide

Precaution of Use: This product contains Sodium azide: a POISONOUS AND HAZARDOUS SUBSTANCE which should be handled by trained staff only.

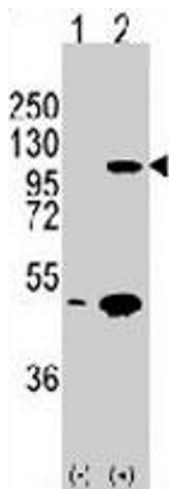
Storage: 4 °C, -20 °C

Storage Comment: Store at 4°C. For long term storage store at -20°C.  
Aliquot to avoid repeated freezing and thawing.

## Publications

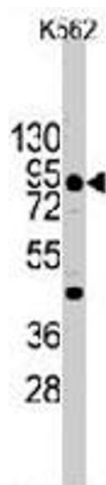
Product cited in: Indelman, Eason, Hummel, Loza, Suri, Leys, Bayne, Schwartz, Sprecher: "Novel CDH3 mutations in hypotrichosis with juvenile macular dystrophy." in: **Clinical and experimental dermatology**, Vol. 32, Issue 2, pp. 191-6, (2007) ([PubMed](#)).

Paredes, Albergaria, Oliveira, Jerónimo, Milanezi, Schmitt: "P-cadherin overexpression is an indicator of clinical outcome in invasive breast carcinomas and is associated with CDH3 promoter hypomethylation." in: **Clinical cancer research : an official journal of the American Association for Cancer Research**, Vol. 11, Issue 16, pp. 5869-77, (2005) ([PubMed](#)).



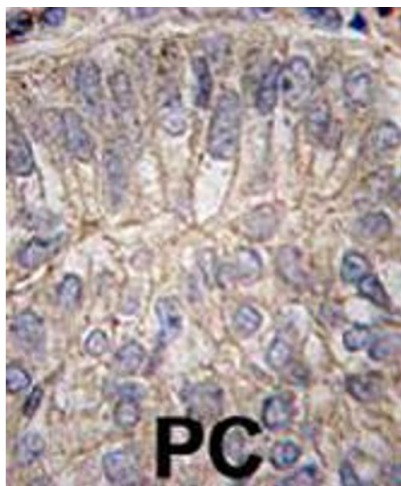
#### Western Blotting

**Image 1.** Western blot analysis of CDH3 (arrow) using rabbit CDH3 polyclonal antibody . 293 cell lysates (2 ug/lane) either nontransfected (Lane 1) or transiently transfected with the CDH3 gene (Lane 2) (Origene Technologies). 293 cell lysates (2 ug/lane) either nontransfected (Lane 1) or transiently transfected with the CDH3 gene (Lane 2) (Origene Technologies).



#### Western Blotting

**Image 2.** Western blot analysis of CDH3 (arrow) using rabbit CDH3 polyclonal antibody in K-562 cell line lysates (35 ug/lane). CDH3 (arrow) was detected using the purified polyclonal antibody (1:1000 dilution).



#### Immunohistochemistry

**Image 3.** Formalin-fixed and paraffin-embedded human prostate carcinoma tissue reacted with CDH3 polyclonal antibody , which was peroxidase-conjugated to the secondary antibody, followed by DAB staining. This data demonstrates the use of this antibody for immunohistochemistry ; clinical relevance has not been evaluated.