

Datasheet for ABIN544511
anti-TLR6 antibody (C-Term)

4 Images

1 Publication

[Go to Product page](#)

Overview

Quantity:	400 µL
Target:	TLR6
Binding Specificity:	C-Term
Reactivity:	Human
Host:	Rabbit
Clonality:	Polyclonal
Conjugate:	This TLR6 antibody is un-conjugated
Application:	Western Blotting (WB), Flow Cytometry (FACS), Immunohistochemistry (Paraffin-embedded Sections) (IHC (p))

Product Details

Purpose:	Rabbit polyclonal antibody raised against synthetic peptide of TLR6.
Immunogen:	A synthetic peptide (conjugated with KLH) corresponding to C-terminus of human TLR6.
Cross-Reactivity:	Human

Target Details

Target:	TLR6
Alternative Name:	CD286 / TLR6 (TLR6 Products)
Gene ID:	10333
Pathways:	TLR Signaling , Activation of Innate immune Response , Cellular Response to Molecule of

Target Details

[Bacterial Origin, Toll-Like Receptors Cascades](#)

Application Details

Application Notes:	Flow Cytometry (1:10-50) Immunohistochemistry (Formalin/PFA-fixed paraffin-embedded sections) (1:50-100) Western Blot (1:1000) The optimal working dilution should be determined by the end user.
--------------------	--

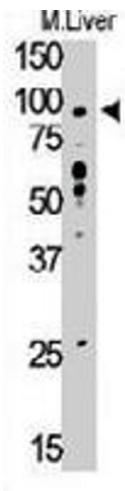
Restrictions:	For Research Use only
---------------	-----------------------

Handling

Format:	Liquid
Buffer:	In PBS (0.09 % sodium azide)
Preservative:	Sodium azide
Precaution of Use:	This product contains Sodium azide: a POISONOUS AND HAZARDOUS SUBSTANCE which should be handled by trained staff only.
Storage:	4 °C,-20 °C
Storage Comment:	Store at 4°C. For long term storage store at -20°C. Aliquot to avoid repeated freezing and thawing.

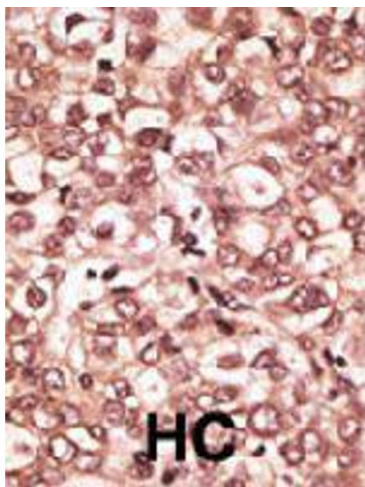
Publications

Product cited in:	Bulut, Faure, Thomas, Equils, Arditi et al.: "Cooperation of Toll-like receptor 2 and 6 for cellular activation by soluble tuberculosis factor and Borrelia burgdorferi outer surface protein A lipoprotein: role of Toll-interacting protein and ..." in: Journal of immunology (Baltimore, Md. : 1950) , Vol. 167, Issue 2, pp. 987-94, (2001) (PubMed).
-------------------	---



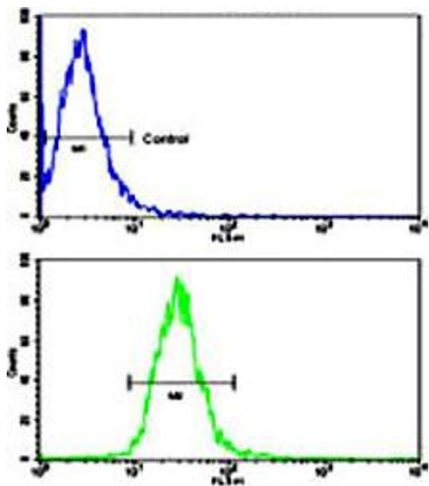
Western Blotting

Image 1. Western blot analysis of TLR6 polyclonal antibody in mouse liver tissue lysate (35 ug/lane). TLR6 (arrow) was detected using the purified polyclonal antibody.



Immunohistochemistry

Image 2. Formalin-fixed and paraffin-embedded human hepatocellular carcinoma tissue reacted with TLR6 polyclonal antibody, which was peroxidase-conjugated to the secondary antibody, followed by AEC staining. This data demonstrates the use of this antibody for immunohistochemistry; clinical relevance has not been evaluated. HC = hepatocarcinoma.



Flow Cytometry

Image 3. Flow cytometric analysis of NCI-H460 cells using TLR6 polyclonal antibody (bottom histogram) compared to a negative control cell (top histogram). FITC-conjugated goat-anti-rabbit secondary antibodies were used for the analysis.

Please check the [product details page](#) for more images. Overall 4 images are available for ABIN544511.