

Datasheet for ABIN544513
anti-TLR6 antibody (C-Term)

3 Images

1 Publication

[Go to Product page](#)

Overview

Quantity:	400 µL
Target:	TLR6
Binding Specificity:	C-Term
Reactivity:	Mouse
Host:	Rabbit
Clonality:	Polyclonal
Conjugate:	This TLR6 antibody is un-conjugated
Application:	Western Blotting (WB), Immunohistochemistry (Paraffin-embedded Sections) (IHC (p))

Product Details

Purpose:	Rabbit polyclonal antibody raised against synthetic peptide of Tlr6.
Immunogen:	A synthetic peptide (conjugated with KLH) corresponding to C-terminus of mouse Tlr6.
Cross-Reactivity:	Human, Mouse

Target Details

Target:	TLR6
Alternative Name:	CD286 / TLR6 (TLR6 Products)
Gene ID:	21899
Pathways:	TLR Signaling , Activation of Innate immune Response , Cellular Response to Molecule of Bacterial Origin , Toll-Like Receptors Cascades

Application Details

Application Notes:	Immunohistochemistry (Formalin/PFA-fixed paraffin-embedded sections) (1:50-100) Western Blot (1:1000) The optimal working dilution should be determined by the end user.
--------------------	--

Restrictions:	For Research Use only
---------------	-----------------------

Handling

Format:	Liquid
---------	--------

Buffer:	In PBS (0.09 % sodium azide)
---------	------------------------------

Preservative:	Sodium azide
---------------	--------------

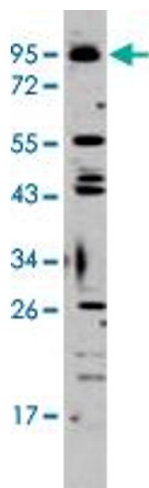
Precaution of Use:	This product contains Sodium azide: a POISONOUS AND HAZARDOUS SUBSTANCE which should be handled by trained staff only.
--------------------	--

Storage:	4 °C,-20 °C
----------	-------------

Storage Comment:	Store at 4°C. For long term storage store at -20°C. Aliquot to avoid repeated freezing and thawing.
------------------	--

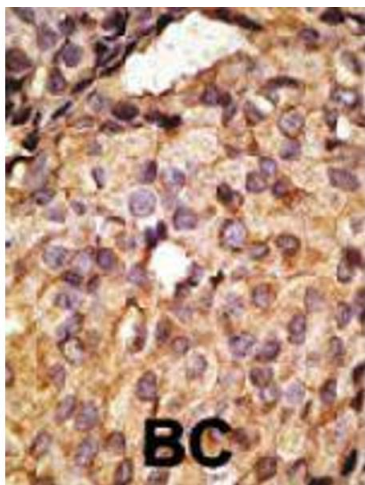
Publications

Product cited in:	Ozinsky, Underhill, Fontenot, Hajjar, Smith, Wilson, Schroeder, Aderem: "The repertoire for pattern recognition of pathogens by the innate immune system is defined by cooperation between toll-like receptors." in: Proceedings of the National Academy of Sciences of the United States of America , Vol. 97, Issue 25, pp. 13766-71, (2000) (PubMed).
-------------------	---



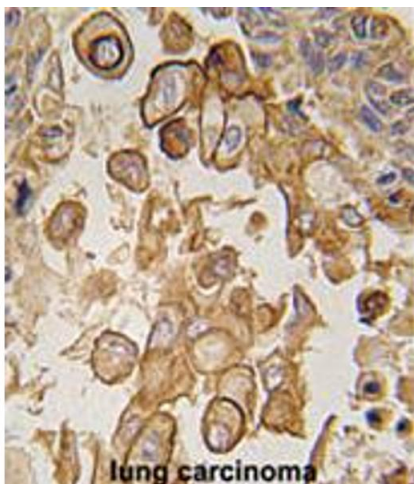
Western Blotting

Image 1. Western blot analysis of K-562 cell lysate (35 ug/lane) with Tlr6 polyclonal antibody .



Immunohistochemistry

Image 2. Formalin-fixed and paraffin-embedded human cancer tissue reacted with Tlr6 polyclonal antibody , which was peroxidase-conjugated to the secondary antibody, followed by AEC staining. This data demonstrates the use of this antibody for immunohistochemistry ; clinical relevance has not been evaluated. BC = breast carcinoma.



Immunohistochemistry

Image 3. Formalin-fixed and paraffin-embedded human lung carcinoma reacted with Tlr6 polyclonal antibody , which was peroxidase-conjugated to the secondary antibody, followed by AEC staining. This data demonstrates the use of this antibody for immunohistochemistry; clinical relevance has not been evaluated.