

Datasheet for ABIN544515
anti-TLR7 antibody (N-Term)[2 Images](#)[3 Publications](#)[Go to Product page](#)

Overview

Quantity:	400 µL
Target:	TLR7
Binding Specificity:	N-Term
Reactivity:	Human, Mouse
Host:	Rabbit
Clonality:	Polyclonal
Conjugate:	This TLR7 antibody is un-conjugated
Application:	Western Blotting (WB), Immunohistochemistry (Paraffin-embedded Sections) (IHC (p))

Product Details

Purpose:	Rabbit polyclonal antibody raised against synthetic peptide of TLR7.
Immunogen:	A synthetic peptide (conjugated with KLH) corresponding to N-terminus of human TLR7.
Cross-Reactivity:	Human, Mouse

Target Details

Target:	TLR7
Alternative Name:	TLR7 (TLR7 Products)
Gene ID:	51284
Pathways:	TLR Signaling , Activation of Innate immune Response , Toll-Like Receptors Cascades

Application Details

Application Notes: Immunohistochemistry (Formalin/PFA-fixed paraffin-embedded sections) (1:50-100)
Western Blot (1:1000)
The optimal working dilution should be determined by the end user.

Restrictions: For Research Use only

Handling

Format: Liquid

Buffer: In PBS (0.09 % sodium azide)

Preservative: Sodium azide

Precaution of Use: This product contains Sodium azide: a POISONOUS AND HAZARDOUS SUBSTANCE which should be handled by trained staff only.

Storage: 4 °C, -20 °C

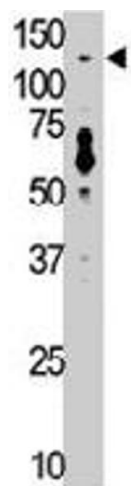
Storage Comment: Store at 4°C. For long term storage store at -20°C.
Aliquot to avoid repeated freezing and thawing.

Publications

Product cited in: Clark, Gurney, Abaya, Baker, Baldwin, Brush, Chen, Chow, Chui, Crowley, Currell, Deuel, Dowd, Eaton, Foster, Grimaldi, Gu, Hass, Heldens, Huang, Kim, Klimowski, Jin, Johnson, Lee, Lewis, Liao, Mark et al.: "The secreted protein discovery initiative (SPDI), a large-scale effort to identify novel human secreted and transmembrane proteins: a bioinformatics assessment. ..." in: **Genome research**, Vol. 13, Issue 10, pp. 2265-70, (2003) ([PubMed](#)).

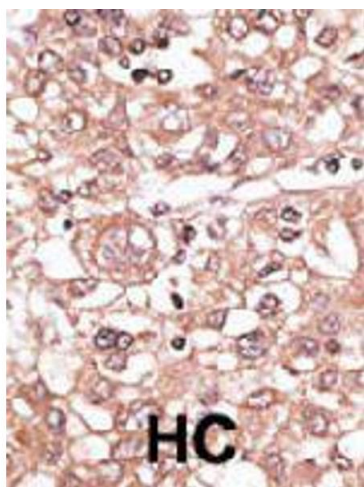
Ito, Amakawa, Kaisho, Hemmi, Tajima, Uehira, Ozaki, Tomizawa, Akira, Fukuhara: "Interferon-alpha and interleukin-12 are induced differentially by Toll-like receptor 7 ligands in human blood dendritic cell subsets." in: **The Journal of experimental medicine**, Vol. 195, Issue 11, pp. 1507-12, (2002) ([PubMed](#)).

Du, Poltorak, Wei, Beutler: "Three novel mammalian toll-like receptors: gene structure, expression, and evolution." in: **European cytokine network**, Vol. 11, Issue 3, pp. 362-71, (2000) ([PubMed](#)).



Western Blotting

Image 1. The TLR7 polyclonal antibody is used in Western blot to detect TLR7 in mouse liver tissue lysate.



Immunohistochemistry

Image 2. Formalin-fixed and paraffin-embedded human hepatocellular carcinoma tissue reacted with TLR7 polyclonal antibody , which was peroxidase-conjugated to the secondary antibody, followed by AEC staining. This data demonstrates the use of this antibody for immunohistochemistry ; clinical relevance has not been evaluated. HC = hepatocarcinoma.