

Datasheet for ABIN544540
anti-GJB2 antibody (C-Term)[2 Images](#)[4 Publications](#)[Go to Product page](#)

Overview

Quantity:	400 µL
Target:	GJB2
Binding Specificity:	C-Term
Reactivity:	Human, Mouse
Host:	Rabbit
Clonality:	Polyclonal
Conjugate:	This GJB2 antibody is un-conjugated
Application:	Western Blotting (WB), Immunohistochemistry (Paraffin-embedded Sections) (IHC (p))

Product Details

Purpose:	Rabbit polyclonal antibody raised against synthetic peptide of GJB2.
Immunogen:	A synthetic peptide (conjugated with KLH) corresponding to C-terminus of human GJB2.
Cross-Reactivity:	Human, Mouse

Target Details

Target:	GJB2
Alternative Name:	GJB2 / Cx26 (GJB2 Products)
Gene ID:	2706
Pathways:	Sensory Perception of Sound , Cell-Cell Junction Organization

Application Details

Application Notes: Immunohistochemistry (Formalin/PFA-fixed paraffin-embedded sections) (1:50-100)
Western Blot (1:1000)
The optimal working dilution should be determined by the end user.

Restrictions: For Research Use only

Handling

Format: Liquid

Buffer: In PBS (0.09 % sodium azide)

Preservative: Sodium azide

Precaution of Use: This product contains Sodium azide: a POISONOUS AND HAZARDOUS SUBSTANCE which should be handled by trained staff only.

Storage: 4 °C, -20 °C

Storage Comment: Store at 4°C. For long term storage store at -20°C.
Aliquot to avoid repeated freezing and thawing.

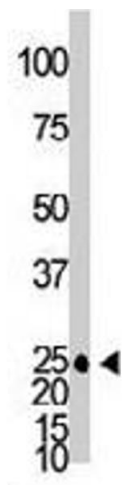
Publications

Product cited in: Alesutan, Sopjani, Munoz, Fraser, Kemp, Föller, Lang: "Inhibition of connexin 26 by the AMP-activated protein kinase." in: **The Journal of membrane biology**, Vol. 240, Issue 3, pp. 151-8, (2011) ([PubMed](#)).

Ohtsuka, Yuge, Kimura, Namba, Abe, Van Laer, Van Camp, Usami: "GJB2 deafness gene shows a specific spectrum of mutations in Japan, including a frequent founder mutation." in: **Human genetics**, Vol. 112, Issue 4, pp. 329-33, (2003) ([PubMed](#)).

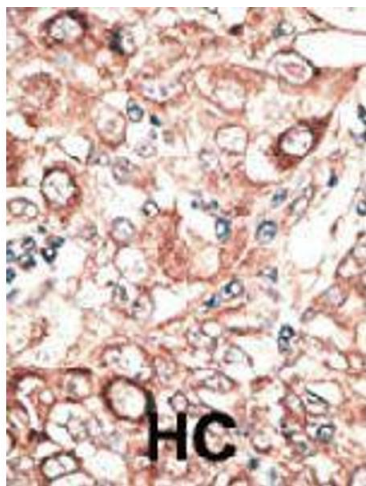
Yotsumoto, Hashiguchi, Chen, Ohtake, Tomitaka, Akamatsu, Matsunaga, Shiraishi, Miura, Adachi, Kanzaki: "Novel mutations in GJB2 encoding connexin-26 in Japanese patients with keratitis-ichthyosis-deafness syndrome." in: **The British journal of dermatology**, Vol. 148, Issue 4, pp. 649-53, (2003) ([PubMed](#)).

Uyguner, Tükel, Baykal, Eris, Emiroglu, Hafiz, Ghanbari, Baserer, Yuksel-Apak, Wollnik: "The novel R75Q mutation in the GJB2 gene causes autosomal dominant hearing loss and palmoplantar keratoderma in a Turkish family." in: **Clinical genetics**, Vol. 62, Issue 4, pp. 306-9, (2002) ([PubMed](#)).



Western Blotting

Image 1. The GJB2 polyclonal antibody is used in Western blot to detect GJB2 in mouse brain tissue lysate.



Immunohistochemistry

Image 2. Formalin-fixed and paraffin-embedded human hepatocellular carcinoma tissue reacted with GJB2 polyclonal antibody , which was peroxidase-conjugated to the secondary antibody, followed by DAB staining. This data demonstrates the use of this antibody for immunohistochemistry ; clinical relevance has not been evaluated. HC = hepatocarcinoma.