

Datasheet for ABIN544549
anti-GJB6 antibody (N-Term)

3 Images

3 Publications

[Go to Product page](#)

Overview

Quantity:	400 µL
Target:	GJB6
Binding Specificity:	N-Term
Reactivity:	Human
Host:	Rabbit
Clonality:	Polyclonal
Conjugate:	This GJB6 antibody is un-conjugated
Application:	Western Blotting (WB), Immunohistochemistry (Paraffin-embedded Sections) (IHC (p))

Product Details

Purpose:	Rabbit polyclonal antibody raised against synthetic peptide of GJB6.
Immunogen:	A synthetic peptide (conjugated with KLH) corresponding to N-terminus of human GJB6.
Cross-Reactivity:	Human

Target Details

Target:	GJB6
Alternative Name:	GJB6 / Cx30 (GJB6 Products)
Gene ID:	10804
Pathways:	Sensory Perception of Sound

Application Details

Application Notes: Immunohistochemistry (Formalin/PFA-fixed paraffin-embedded sections) (1:50-100)
Western Blot (1:1000)
The optimal working dilution should be determined by the end user.

Restrictions: For Research Use only

Handling

Format: Liquid

Buffer: In PBS (0.09 % sodium azide)

Preservative: Sodium azide

Precaution of Use: This product contains Sodium azide: a POISONOUS AND HAZARDOUS SUBSTANCE which should be handled by trained staff only.

Storage: 4 °C, -20 °C

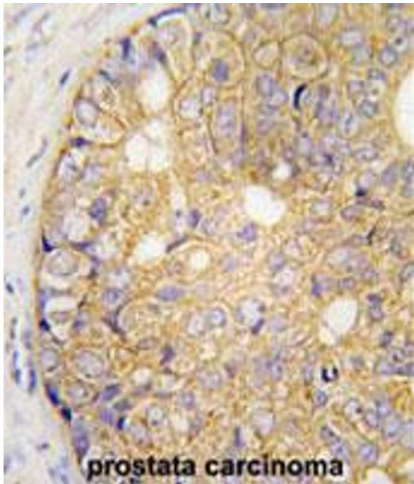
Storage Comment: Store at 4°C. For long term storage store at -20°C.
Aliquot to avoid repeated freezing and thawing.

Publications

Product cited in: Beltramello, Bicego, Piazza, Ciubotaru, Mammano, DAndrea: "Permeability and gating properties of human connexins 26 and 30 expressed in HeLa cells." in: **Biochemical and biophysical research communications**, Vol. 305, Issue 4, pp. 1024-33, (2003) ([PubMed](#)).

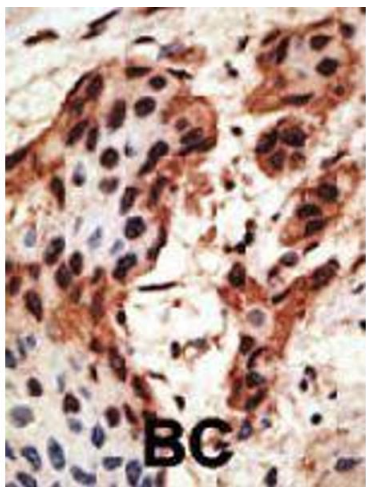
Common, Becker, Di, Leigh, OToole, Kelsell: "Functional studies of human skin disease- and deafness-associated connexin 30 mutations." in: **Biochemical and biophysical research communications**, Vol. 298, Issue 5, pp. 651-6, (2002) ([PubMed](#)).

Smith, Morley, McLean: "A novel connexin 30 mutation in Clouston syndrome." in: **The Journal of investigative dermatology**, Vol. 118, Issue 3, pp. 530-2, (2002) ([PubMed](#)).



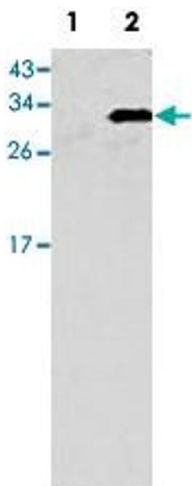
Immunohistochemistry

Image 1. Formalin-fixed and paraffin-embedded human prostate carcinoma reacted with GJB6 polyclonal antibody , which was peroxidase-conjugated to the secondary antibody, followed by AEC staining. This data demonstrates the use of this antibody for immunohistochemistry; clinical relevance has not been evaluated.



Immunohistochemistry

Image 2. Formalin-fixed and paraffin-embedded human cancer tissue reacted with GJB6 polyclonal antibody , which was peroxidase-conjugated to the secondary antibody, followed by AEC staining. This data demonstrates the use of this antibody for immunohistochemistry ; clinical relevance has not been evaluated. BC = breast carcinoma.



Western Blotting

Image 3. Western blot analysis of GJB6 (arrow) using GJB6 polyclonal antibody . 293 cell lysates (2 ug/lane) either nontransfected (Lane 1) or transiently transfected with the GJB6 gene (Lane 2).