

Datasheet for ABIN544555  
**anti-GJD2 antibody (C-Term)****2** Images**1** Publication[Go to Product page](#)

## Overview

Quantity:	400 µL
Target:	GJD2
Binding Specificity:	C-Term
Reactivity:	Human
Host:	Rabbit
Clonality:	Polyclonal
Conjugate:	This GJD2 antibody is un-conjugated
Application:	Western Blotting (WB), Immunohistochemistry (Paraffin-embedded Sections) (IHC (p))

## Product Details

Purpose:	Rabbit polyclonal antibody raised against synthetic peptide of GJD2.
Immunogen:	A synthetic peptide (conjugated with KLH) corresponding to C-terminus of human GJD2.
Cross-Reactivity:	Human

## Target Details

Target:	GJD2
Alternative Name:	GJD2 / Cx36 ( <a href="#">GJD2 Products</a> )
Gene ID:	57369

## Application Details

Application Notes:	Immunohistochemistry (Formalin/PFA-fixed paraffin-embedded sections) (1:50-100) Western Blot (1:2000) The optimal working dilution should be determined by the end user.
--------------------	--

Restrictions:	For Research Use only
---------------	-----------------------

## Handling

Format:	Liquid
---------	--------

Buffer:	In PBS (0.09 % sodium azide)
---------	------------------------------

Preservative:	Sodium azide
---------------	--------------

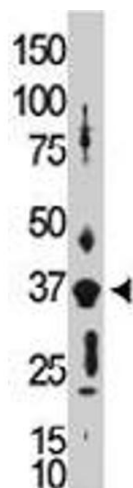
Precaution of Use:	This product contains Sodium azide: a POISONOUS AND HAZARDOUS SUBSTANCE which should be handled by trained staff only.
--------------------	--

Storage:	4 °C,-20 °C
----------	-------------

Storage Comment:	Store at 4°C. For long term storage store at -20°C. Aliquot to avoid repeated freezing and thawing.
------------------	--

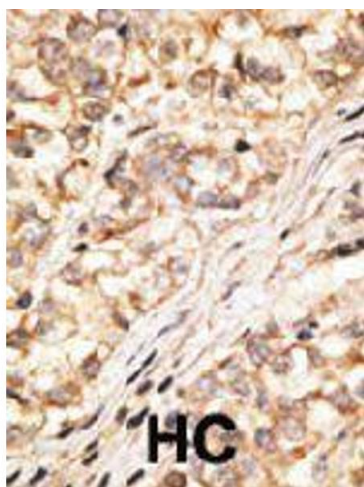
## Publications

Product cited in:	de Brouwer, Pennings, Roeters, Van Hauwe, Astuto, Hoefsloot, Huygen, van den Helm, Deutman, Bork, Kimberling, Cremers, Cremers, Kremer: "Mutations in the calcium-binding motifs of CDH23 and the 35delG mutation in GJB2 cause hearing loss in one family." in: <b>Human genetics</b> , Vol. 112, Issue 2, pp. 156-63, (2003) ( <a href="#">PubMed</a> ).
-------------------	--



### Western Blotting

**Image 1.** The GJD2 polyclonal antibody is used in Western blot to detect GJD2 in placenta tissue lysate.



### Immunohistochemistry

**Image 2.** Formalin-fixed and paraffin-embedded human hepatocellular carcinoma tissue reacted with GJD2 polyclonal antibody , which was peroxidase-conjugated to the secondary antibody, followed by DAB staining. This data demonstrates the use of this antibody for immunohistochemistry ; clinical relevance has not been evaluated. HC = hepatocarcinoma.