

Datasheet for ABIN544592

**anti-SIGLEC5 antibody (N-Term)****2** Images**1** Publication[Go to Product page](#)

## Overview

Quantity:	400 µL
Target:	SIGLEC5
Binding Specificity:	N-Term
Reactivity:	Human, Mouse
Host:	Rabbit
Clonality:	Polyclonal
Conjugate:	This SIGLEC5 antibody is un-conjugated
Application:	Western Blotting (WB), Immunohistochemistry (Paraffin-embedded Sections) (IHC (p))

## Product Details

Purpose:	Rabbit polyclonal antibody raised against synthetic peptide of SIGLEC5.
Immunogen:	A synthetic peptide (conjugated with KLH) corresponding to N-terminus of human SIGLEC5.
Cross-Reactivity:	Human, Mouse

## Target Details

Target:	SIGLEC5
Alternative Name:	CD170 / SIGLEC5 ( <a href="#">SIGLEC5 Products</a> )
Gene ID:	8778

## Application Details

Application Notes:	Immunohistochemistry (Formalin/PFA-fixed paraffin-embedded sections) (1:50-100) Western Blot (1:1000) The optimal working dilution should be determined by the end user.
--------------------	--

Restrictions:	For Research Use only
---------------	-----------------------

## Handling

Format:	Liquid
---------	--------

Buffer:	In PBS (0.09 % sodium azide)
---------	------------------------------

Preservative:	Sodium azide
---------------	--------------

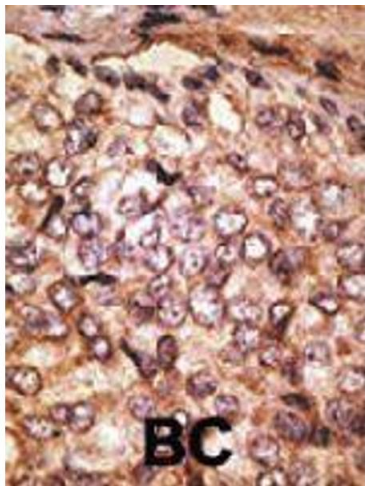
Precaution of Use:	This product contains Sodium azide: a POISONOUS AND HAZARDOUS SUBSTANCE which should be handled by trained staff only.
--------------------	--

Storage:	4 °C,-20 °C
----------	-------------

Storage Comment:	Store at 4°C. For long term storage store at -20°C. Aliquot to avoid repeated freezing and thawing.
------------------	--

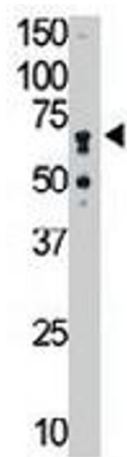
## Publications

Product cited in:	Erickson-Miller, Freeman, Hopson, DAlessio, Fischer, Kikly, Abrahamson, Holmes, King: "Characterization of Siglec-5 (CD170) expression and functional activity of anti-Siglec-5 antibodies on human phagocytes." in: <b>Experimental hematology</b> , Vol. 31, Issue 5, pp. 382-8, (2003) ( <a href="#">PubMed</a> ).
-------------------	---



#### Immunohistochemistry

**Image 1.** Formalin-fixed and paraffin-embedded human cancer tissue reacted with SIGLEC5 polyclonal antibody , which was peroxidase-conjugated to the secondary antibody, followed by DAB staining. This data demonstrates the use of this antibody for immunohistochemistry ; clinical relevance has not been evaluated. BC = breast carcinoma.



#### Western Blotting

**Image 2.** The SIGLEC5 polyclonal antibody is used in Western blot to detect SIGLEC5 in mouse liver tissue lysate.