

Datasheet for ABIN544595
anti-SIGLEC6 antibody (C-Term)

2 Images

[Go to Product page](#)

Overview

Quantity:	400 µL
Target:	SIGLEC6
Binding Specificity:	C-Term
Reactivity:	Human, Mouse
Host:	Rabbit
Clonality:	Polyclonal
Conjugate:	This SIGLEC6 antibody is un-conjugated
Application:	Western Blotting (WB), Immunohistochemistry (Paraffin-embedded Sections) (IHC (p))

Product Details

Purpose:	Rabbit polyclonal antibody raised against synthetic peptide of SIGLEC6.
Immunogen:	A synthetic peptide (conjugated with KLH) corresponding to C-terminus of human SIGLEC6.
Cross-Reactivity:	Human, Mouse

Target Details

Target:	SIGLEC6
Alternative Name:	CD327 / SIGLEC6 (SIGLEC6 Products)
Gene ID:	946

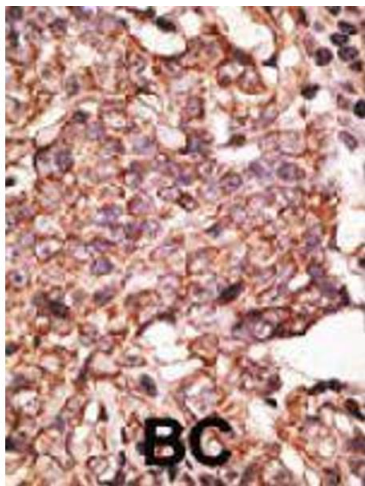
Application Details

Application Notes:	Immunohistochemistry (Formalin/PFA-fixed paraffin-embedded sections) (1:50-100) Western Blot (1:1000) The optimal working dilution should be determined by the end user.
Restrictions:	For Research Use only

Handling

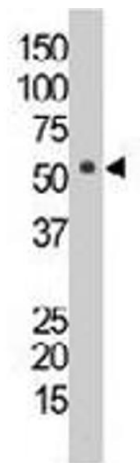
Format:	Liquid
Buffer:	In PBS (0.09 % sodium azide)
Preservative:	Sodium azide
Precaution of Use:	This product contains Sodium azide: a POISONOUS AND HAZARDOUS SUBSTANCE which should be handled by trained staff only.
Storage:	4 °C,-20 °C
Storage Comment:	Store at 4°C. For long term storage store at -20°C. Aliquot to avoid repeated freezing and thawing.

Images



Immunohistochemistry

Image 1. Formalin-fixed and paraffin-embedded human cancer tissue reacted with SIGLEC6 polyclonal antibody , which was peroxidase-conjugated to the secondary antibody, followed by AEC staining. This data demonstrates the use of this antibody for immunohistochemistry ; clinical relevance has not been evaluated. BC = breast carcinoma.



Western Blotting

Image 2. The SIGLEC6 polyclonal antibody is used in Western blot to detect SIGLEC6 in mouse spleen tissue lysate.