

Datasheet for ABIN544598

**anti-SIGLEC8 antibody (C-Term)****2** Images**3** Publications[Go to Product page](#)

## Overview

Quantity:	400 µL
Target:	SIGLEC8
Binding Specificity:	C-Term
Reactivity:	Human, Mouse
Host:	Rabbit
Clonality:	Polyclonal
Conjugate:	This SIGLEC8 antibody is un-conjugated
Application:	Western Blotting (WB), Immunohistochemistry (Paraffin-embedded Sections) (IHC (p))

## Product Details

Purpose:	Rabbit polyclonal antibody raised against synthetic peptide of SIGLEC8.
Immunogen:	A synthetic peptide (conjugated with KLH) corresponding to C-terminus of human SIGLEC8.
Cross-Reactivity:	Human, Mouse

## Target Details

Target:	SIGLEC8
Alternative Name:	CD329 / SIGLEC8 ( <a href="#">SIGLEC8 Products</a> )
Gene ID:	27181

## Application Details

Application Notes: Immunohistochemistry (Formalin/PFA-fixed paraffin-embedded sections) (1:50-100)  
Western Blot (1:1000)  
The optimal working dilution should be determined by the end user.

Restrictions: For Research Use only

## Handling

Format: Liquid

Buffer: In PBS (0.09 % sodium azide)

Preservative: Sodium azide

Precaution of Use: This product contains Sodium azide: a POISONOUS AND HAZARDOUS SUBSTANCE which should be handled by trained staff only.

Storage: 4 °C, -20 °C

Storage Comment: Store at 4°C. For long term storage store at -20°C.  
Aliquot to avoid repeated freezing and thawing.

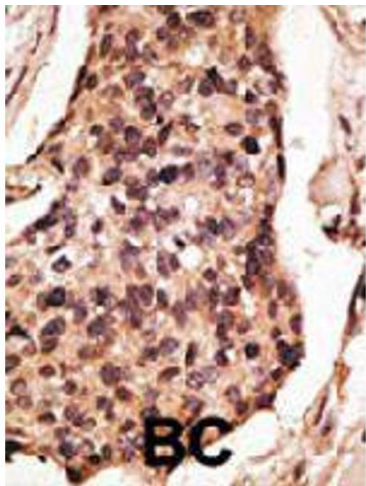
## Publications

Product cited in:

Foussias, Yousef, Diamandis: "Molecular characterization of a Siglec8 variant containing cytoplasmic tyrosine-based motifs, and mapping of the Siglec8 gene." in: **Biochemical and biophysical research communications**, Vol. 278, Issue 3, pp. 775-81, (2000) ([PubMed](#)).

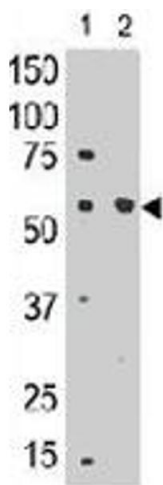
Floyd, Ni, Cornish, Zeng, Liu, Carter, Steel, Crocker: "Siglec-8. A novel eosinophil-specific member of the immunoglobulin superfamily." in: **The Journal of biological chemistry**, Vol. 275, Issue 2, pp. 861-6, (2000) ([PubMed](#)).

Kikly, Bochner, Freeman, Tan, Gallagher, Dalessio, Holmes, Abrahamson, Erickson-Miller, Murdock, Tachimoto, Schleimer, White: "Identification of SAF-2, a novel siglec expressed on eosinophils, mast cells, and basophils." in: **The Journal of allergy and clinical immunology**, Vol. 105, Issue 6 Pt 1, pp. 1093-100, (2000) ([PubMed](#)).



#### Immunohistochemistry

**Image 1.** Formalin-fixed and paraffin-embedded human cancer tissue reacted with the SIGLEC8 polyclonal antibody , which was peroxidase-conjugated to the secondary antibody, followed by DAB staining. This data demonstrates the use of this antibody for immunohistochemistry ; clinical relevance has not been evaluated. BC = breast carcinoma.



#### Western Blotting

**Image 2.** The SIGLEC8 polyclonal antibody is used in Western blot to detect SIGLEC8 in mouse liver tissue lysate (lane 1) and in HL-60 cell lysate (lane 2) .