

Datasheet for ABIN544600

anti-SIGLEC9 antibody (C-Term)**2** Images**3** Publications[Go to Product page](#)

Overview

Quantity:	400 µL
Target:	SIGLEC9
Binding Specificity:	C-Term
Reactivity:	Human, Mouse
Host:	Rabbit
Clonality:	Polyclonal
Conjugate:	This SIGLEC9 antibody is un-conjugated
Application:	Western Blotting (WB), Immunohistochemistry (Paraffin-embedded Sections) (IHC (p))

Product Details

Purpose:	Rabbit polyclonal antibody raised against synthetic peptide of SIGLEC9.
Immunogen:	A synthetic peptide (conjugated with KLH) corresponding to C-terminus of human SIGLEC9.
Cross-Reactivity:	Human, Mouse

Target Details

Target:	SIGLEC9
Alternative Name:	CD329 / SIGLEC9 (SIGLEC9 Products)
Gene ID:	27180

Application Details

Application Notes: Immunohistochemistry (Formalin/PFA-fixed paraffin-embedded sections) (1:50-100)
Western Blot (1:1000)
The optimal working dilution should be determined by the end user.

Restrictions: For Research Use only

Handling

Format: Liquid

Buffer: In PBS (0.09 % sodium azide)

Preservative: Sodium azide

Precaution of Use: This product contains Sodium azide: a POISONOUS AND HAZARDOUS SUBSTANCE which should be handled by trained staff only.

Storage: 4 °C, -20 °C

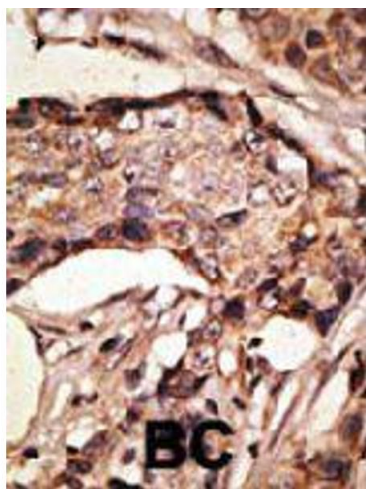
Storage Comment: Store at 4°C. For long term storage store at -20°C.
Aliquot to avoid repeated freezing and thawing.

Publications

Product cited in: Clark, Gurney, Abaya, Baker, Baldwin, Brush, Chen, Chow, Chui, Crowley, Currell, Deuel, Dowd, Eaton, Foster, Grimaldi, Gu, Hass, Heldens, Huang, Kim, Klimowski, Jin, Johnson, Lee, Lewis, Liao, Mark et al.: "The secreted protein discovery initiative (SPDI), a large-scale effort to identify novel human secreted and transmembrane proteins: a bioinformatics assessment. ..." in: **Genome research**, Vol. 13, Issue 10, pp. 2265-70, (2003) ([PubMed](#)).

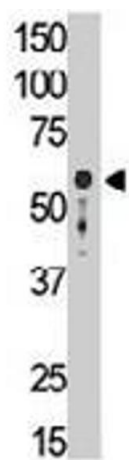
Zhang, Nicoll, Jones, Crocker: "Siglec-9, a novel sialic acid binding member of the immunoglobulin superfamily expressed broadly on human blood leukocytes." in: **The Journal of biological chemistry**, Vol. 275, Issue 29, pp. 22121-6, (2000) ([PubMed](#)).

Foussias, Yousef, Diamandis: "Identification and molecular characterization of a novel member of the siglec family (SIGLEC9)." in: **Genomics**, Vol. 67, Issue 2, pp. 171-8, (2000) ([PubMed](#)).



Immunohistochemistry

Image 1. Formalin-fixed and paraffin-embedded human cancer tissue reacted with SIGLEC9 polyclonal antibody , which was peroxidase-conjugated to the secondary antibody, followed by AEC staining. This data demonstrates the use of this antibody for immunohistochemistry ; clinical relevance has not been evaluated. BC = breast carcinoma.



Western Blotting

Image 2. The SIGLEC9 polyclonal antibody is used in Western blot to detect SIGLEC9 in mouse liver tissue lysate.