

Datasheet for ABIN544799
anti-CCBP2 antibody (N-Term)[Go to Product page](#)

2 Images

3 Publications

Overview

Quantity:	400 µL
Target:	CCBP2
Binding Specificity:	N-Term
Reactivity:	Human, Mouse
Host:	Rabbit
Clonality:	Polyclonal
Conjugate:	This CCBP2 antibody is un-conjugated
Application:	Western Blotting (WB), Immunohistochemistry (Paraffin-embedded Sections) (IHC (p))

Product Details

Purpose:	Rabbit polyclonal antibody raised against synthetic peptide of CCBP2.
Immunogen:	A synthetic peptide (conjugated with KLH) corresponding to N-terminus of human CCBP2.
Cross-Reactivity:	Human, Mouse

Target Details

Target:	CCBP2
Alternative Name:	CCBP2 (CCBP2 Products)
Gene ID:	1238

Application Details

Application Notes: Immunohistochemistry (Formalin/PFA-fixed paraffin-embedded sections) (1:50-100)
Western Blot (1:1000)
The optimal working dilution should be determined by the end user.

Restrictions: For Research Use only

Handling

Format: Liquid

Buffer: In PBS (0.09 % sodium azide)

Preservative: Sodium azide

Precaution of Use: This product contains Sodium azide: a POISONOUS AND HAZARDOUS SUBSTANCE which should be handled by trained staff only.

Storage: 4 °C,-20 °C

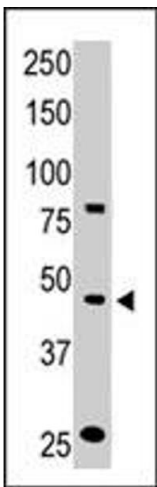
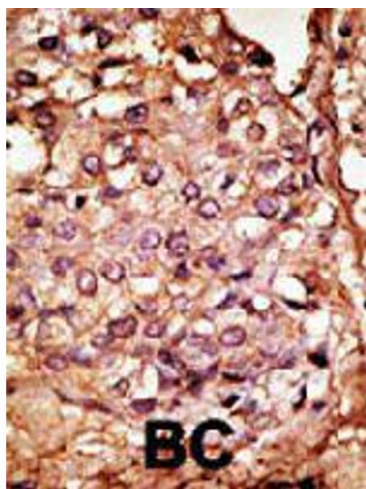
Storage Comment: Store at 4°C. For long term storage store at -20°C.
Aliquot to avoid repeated freezing and thawing.

Publications

Product cited in: Soler, Humphreys, Spinola, Campbell: "CCR4 versus CCR10 in human cutaneous TH lymphocyte trafficking." in: **Blood**, Vol. 101, Issue 5, pp. 1677-82, (2003) ([PubMed](#)).

Fra, Locati, Otero, Sironi, Signorelli, Massardi, Gobbi, Vecchi, Sozzani, Mantovani: "Cutting edge: scavenging of inflammatory CC chemokines by the promiscuous putatively silent chemokine receptor D6." in: **Journal of immunology (Baltimore, Md. : 1950)**, Vol. 170, Issue 5, pp. 2279-82, (2003) ([PubMed](#)).

Kunkel, Kim, Lazarus, Vierra, Soler, Bowman, Butcher: "CCR10 expression is a common feature of circulating and mucosal epithelial tissue IgA Ab-secreting cells." in: **The Journal of clinical investigation**, Vol. 111, Issue 7, pp. 1001-10, (2003) ([PubMed](#)).



Immunohistochemistry

Image 1. Formalin-fixed and paraffin-embedded human cancer tissue reacted with CCBP2 polyclonal antibody , which was peroxidase-conjugated to the secondary antibody, followed by AEC staining. This data demonstrates the use of this antibody for immunohistochemistry; clinical relevance has not been evaluated. BC = breast carcinoma; HC = hepatocarcinoma.

Western Blotting

Image 2. The CCBP2 polyclonal antibody is used in Western blot to detect CCBP2 in mouse liver tissue lysate.