

Datasheet for ABIN544818
anti-PDHX antibody (C-Term)

3 Images

1 Publication

[Go to Product page](#)

Overview

Quantity:	400 µL
Target:	PDHX
Binding Specificity:	C-Term
Reactivity:	Human
Host:	Rabbit
Clonality:	Polyclonal
Conjugate:	This PDHX antibody is un-conjugated
Application:	Western Blotting (WB), Immunohistochemistry (Paraffin-embedded Sections) (IHC (p))

Product Details

Purpose:	Rabbit polyclonal antibody raised against synthetic peptide of PDHX.
Immunogen:	A synthetic peptide (conjugated with KLH) corresponding to C-terminus of human PDHX.
Cross-Reactivity:	Human

Target Details

Target:	PDHX
Alternative Name:	PDHX / PDX1 (PDHX Products)
Gene ID:	8050

Application Details

Application Notes: Western Blot (1:1000)
The optimal working dilution should be determined by the end user.

Restrictions: For Research Use only

Handling

Format: Liquid

Buffer: In PBS (0.09 % sodium azide)

Preservative: Sodium azide

Precaution of Use: This product contains Sodium azide: a POISONOUS AND HAZARDOUS SUBSTANCE which should be handled by trained staff only.

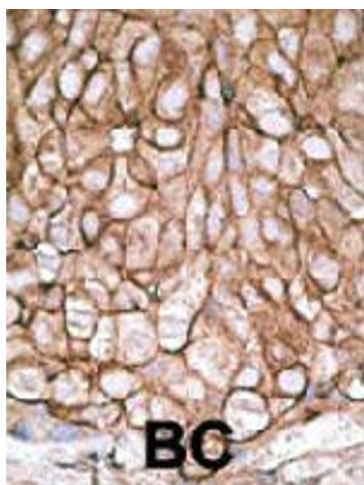
Storage: 4 °C, -20 °C

Storage Comment: Store at 4°C. For long term storage store at -20°C.
Aliquot to avoid repeated freezing and thawing.

Publications

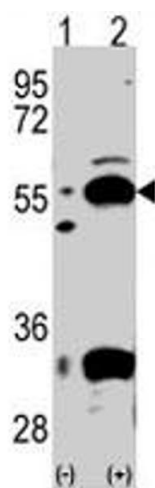
Product cited in: Murray, Gilkerson, Capaldi: "Quantitative proteomics: the copy number of pyruvate dehydrogenase is more than 10(2)-fold lower than that of complex III in human mitochondria." in: **FEBS letters**, Vol. 529, Issue 2-3, pp. 173-8, (2002) ([PubMed](#)).

Images



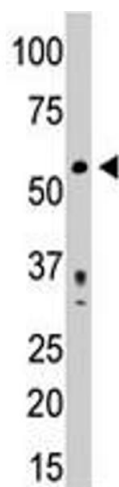
Immunohistochemistry

Image 1. Formalin-fixed and paraffin-embedded human cancer tissue reacted with PDHX polyclonal antibody, which was peroxidase-conjugated to the secondary antibody, followed by DAB staining. This data demonstrates the use of this antibody for immunohistochemistry; clinical relevance has not been evaluated. BC = breast carcinoma; HC = hepatocarcinoma.



Western Blotting

Image 2. Western blot analysis of PDX1 (arrow) using rabbit PDHX polyclonal antibody . 293 cell lysates (2 ug/lane) either nontransfected (Lane 1) or transiently transfected with the PDX1 gene (Lane 2) (Origene Technologies).



Western Blotting

Image 3. The PDHX polyclonal antibody is used in Western blot to detect PDHX in mouse heart tissue lysate.