

Datasheet for ABIN544836  
**anti-ZFP42 antibody (N-Term)**[Go to Product page](#)

1 Image

1 Publication

## Overview

Quantity:	400 µL
Target:	ZFP42
Binding Specificity:	N-Term
Reactivity:	Human, Mouse
Host:	Rabbit
Clonality:	Polyclonal
Conjugate:	This ZFP42 antibody is un-conjugated
Application:	Western Blotting (WB)

## Product Details

Purpose:	Rabbit polyclonal antibody raised against synthetic peptide of ZFP42.
Immunogen:	A synthetic peptide (conjugated with KLH) corresponding to N-terminus of human ZFP42.
Cross-Reactivity:	Human, Mouse

## Target Details

Target:	ZFP42
Alternative Name:	ZFP42 ( <a href="#">ZFP42 Products</a> )
Gene ID:	132625

## Application Details

Application Notes:	Western Blot (1:1000) The optimal working dilution should be determined by the end user.
Restrictions:	For Research Use only

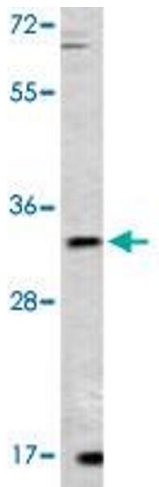
## Handling

Format:	Liquid
Buffer:	In PBS (0.09 % sodium azide)
Preservative:	Sodium azide
Precaution of Use:	This product contains Sodium azide: a POISONOUS AND HAZARDOUS SUBSTANCE which should be handled by trained staff only.
Storage:	4 °C,-20 °C
Storage Comment:	Store at 4°C. For long term storage store at -20°C. Aliquot to avoid repeated freezing and thawing.

## Publications

Product cited in:	Hewetson, Chilton: "Progesterone-dependent deoxyribonucleic acid looping between RUSH/SMARCA3 and Egr-1 mediates repression by c-Rel." in: <b>Molecular endocrinology (Baltimore, Md.)</b> , Vol. 22, Issue 4, pp. 813-22, (2008) ( <a href="#">PubMed</a> ).
-------------------	---

## Images



### Western Blotting

**Image 1.** Western blot analysis of mouse lung tissue lysate (35 ug/lane) with ZFP42 polyclonal antibody .