

Datasheet for ABIN544922  
**anti-PFKP antibody (C-Term)**

2 Images

1 Publication

[Go to Product page](#)

## Overview

Quantity:	400 µL
Target:	PFKP
Binding Specificity:	C-Term
Reactivity:	Human
Host:	Rabbit
Clonality:	Polyclonal
Conjugate:	This PFKP antibody is un-conjugated
Application:	Western Blotting (WB), ELISA, Immunohistochemistry (Paraffin-embedded Sections) (IHC (p))

## Product Details

Purpose:	Rabbit polyclonal antibody raised against synthetic peptide of PFKP.
Immunogen:	A synthetic peptide (conjugated with KLH) corresponding to C-terminus of human PFKP.
Cross-Reactivity:	Human

## Target Details

Target:	PFKP
Alternative Name:	PFKP ( <a href="#">PFKP Products</a> )
Gene ID:	5214
Pathways:	<a href="#">Warburg Effect</a>

## Application Details

Application Notes:	ELISA (1:1000) Western Blot (1:100-500) Immunohistochemistry (1:50-100) The optimal working dilution should be determined by the end user.
--------------------	---

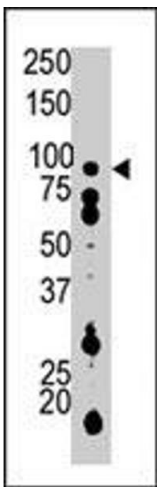
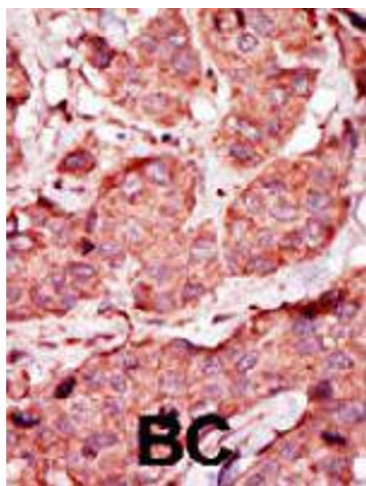
Restrictions:	For Research Use only
---------------	-----------------------

## Handling

Format:	Liquid
Buffer:	In PBS (0.09 % sodium azide)
Preservative:	Sodium azide
Precaution of Use:	This product contains Sodium azide: a POISONOUS AND HAZARDOUS SUBSTANCE which should be handled by trained staff only.
Storage:	4 °C, -20 °C
Storage Comment:	Store at 4°C. For long term storage store at -20°C. Aliquot to avoid repeated freezing and thawing.

## Publications

Product cited in:	Adam, Sorensen, Cravatt: "Trifunctional chemical probes for the consolidated detection and identification of enzyme activities from complex proteomes." in: <b>Molecular &amp; cellular proteomics : MCP</b> , Vol. 1, Issue 10, pp. 828-35, (2002) ( <a href="#">PubMed</a> ).
-------------------	---



### Immunohistochemistry

**Image 1.** Formalin-fixed and paraffin-embedded human breast cancer tissue reacted with PFKP polyclonal antibody , which was peroxidase-conjugated to the secondary antibody, followed by AEC staining. This data demonstrates the use of this antibody for immunohistochemistry; clinical relevance has not been evaluated.

### Western Blotting

**Image 2.** The PFKP polyclonal antibody is used in Western blot to detect PFKP in Ramos cell lysate.