

Datasheet for ABIN544956
anti-NME4 antibody (C-Term)[Go to Product page](#)

2 Images

Overview

Quantity:	400 µL
Target:	NME4
Binding Specificity:	C-Term
Reactivity:	Human
Host:	Rabbit
Clonality:	Polyclonal
Conjugate:	This NME4 antibody is un-conjugated
Application:	Western Blotting (WB), ELISA, Immunohistochemistry (Paraffin-embedded Sections) (IHC (p))

Product Details

Purpose:	Rabbit polyclonal antibody raised against synthetic peptide of NME4.
Immunogen:	A synthetic peptide (conjugated with KLH) corresponding to C-terminus of human NME4.
Cross-Reactivity:	Human

Target Details

Target:	NME4
Alternative Name:	NME4 (NME4 Products)
Gene ID:	4833
Pathways:	Nucleotide Phosphorylation , Ribonucleoside Biosynthetic Process

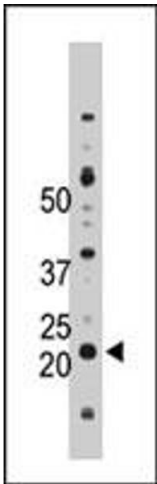
Application Details

Application Notes:	ELISA (1:1000) Western Blot (1:100-500) Immunohistochemistry (1:50-100) The optimal working dilution should be determined by the end user.
Restrictions:	For Research Use only

Handling

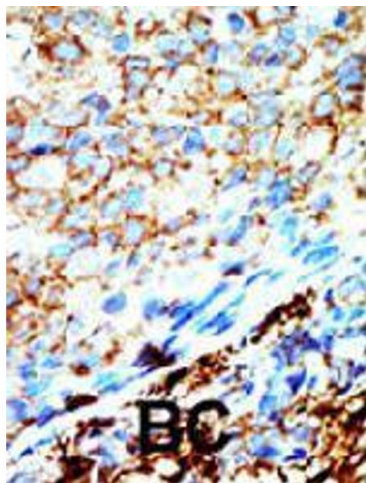
Format:	Liquid
Buffer:	In PBS (0.09 % sodium azide)
Preservative:	Sodium azide
Precaution of Use:	This product contains Sodium azide: a POISONOUS AND HAZARDOUS SUBSTANCE which should be handled by trained staff only.
Storage:	4 °C,-20 °C
Storage Comment:	Store at 4°C. For long term storage store at -20°C. Aliquot to avoid repeated freezing and thawing.

Images



Western Blotting

Image 1. The NME4 polyclonal antibody is used in Western blot to detect NME4 in Jurkat cell lysate.



Immunohistochemistry

Image 2. Formalin-fixed and paraffin-embedded human breast cancer tissue reacted with NME4 polyclonal antibody , which was peroxidase-conjugated to the secondary antibody, followed by AEC staining. This data demonstrates the use of this antibody for immunohistochemistry; clinical relevance has not been evaluated.