

Datasheet for ABIN544957

**anti-PFKFB4 antibody (Internal Region)****2** Images[Go to Product page](#)

## Overview

Quantity:	400 µL
Target:	PFKFB4
Binding Specificity:	Internal Region
Reactivity:	Human, Mouse
Host:	Rabbit
Clonality:	Polyclonal
Conjugate:	This PFKFB4 antibody is un-conjugated
Application:	ELISA, Western Blotting (WB), Immunohistochemistry (Paraffin-embedded Sections) (IHC (p))

## Product Details

Purpose:	Rabbit polyclonal antibody raised against synthetic peptide of PFKFB4.
Immunogen:	A synthetic peptide (conjugated with KLH) corresponding to internal region of human PFKFB4.
Cross-Reactivity:	Human, Mouse

## Target Details

Target:	PFKFB4
Alternative Name:	PFKFB4 ( <a href="#">PFKFB4 Products</a> )
Gene ID:	5210

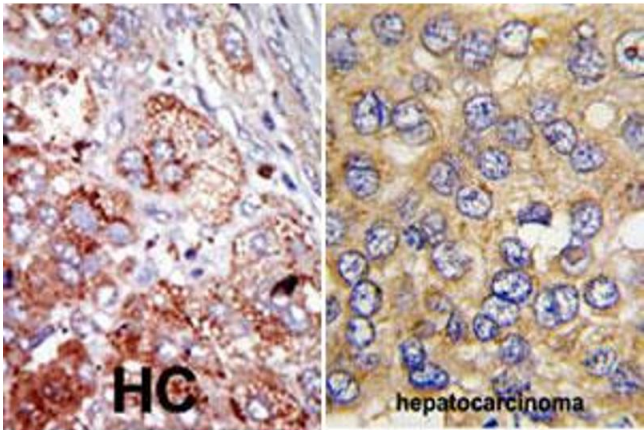
## Application Details

Application Notes:	ELISA (1:1000) Western Blot (1:100-500) Immunohistochemistry (1:50-100) The optimal working dilution should be determined by the end user.
Restrictions:	For Research Use only

## Handling

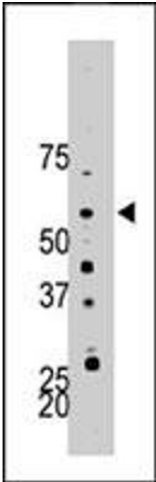
Format:	Liquid
Buffer:	In PBS (0.09 % sodium azide)
Preservative:	Sodium azide
Precaution of Use:	This product contains Sodium azide: a POISONOUS AND HAZARDOUS SUBSTANCE which should be handled by trained staff only.
Storage:	4 °C, -20 °C
Storage Comment:	Store at 4°C. For long term storage store at -20°C. Aliquot to avoid repeated freezing and thawing.

## Images



Immunohistochemistry

**Image 1.** Formalin-fixed and paraffin-embedded human hepatocellular carcinoma tissue reacted with PFKFB4 polyclonal antibody , which was peroxidase-conjugated to the secondary antibody, followed by AEC staining. This data demonstrates the use of this antibody for immunohistochemistry; clinical relevance has not been evaluated.



Western Blotting

**Image 2.** The PFKFB4 polyclonal antibody is used in Western blot to detect PFKFB4 in mouse brain tissue lysate.