

Datasheet for ABIN544959

anti-YWHAB antibody (C-Term)[2 Images](#)[3 Publications](#)[Go to Product page](#)

Overview

Quantity:	400 µL
Target:	YWHAB
Binding Specificity:	C-Term
Reactivity:	Human
Host:	Rabbit
Clonality:	Polyclonal
Conjugate:	This YWHAB antibody is un-conjugated
Application:	Western Blotting (WB), ELISA, Immunohistochemistry (Paraffin-embedded Sections) (IHC (p))

Product Details

Purpose:	Rabbit polyclonal antibody raised against synthetic peptide of YWHAB.
Immunogen:	A synthetic peptide (conjugated with KLH) corresponding to C-terminus of human YWHAB.
Cross-Reactivity:	Human

Target Details

Target:	YWHAB
Alternative Name:	14-3-3 protein beta/alpha (YWHAB Products)
Gene ID:	7529
Pathways:	Fc-epsilon Receptor Signaling Pathway , EGFR Signaling Pathway , Neurotrophin Signaling Pathway , Myometrial Relaxation and Contraction , Maintenance of Protein Location

Application Details

Application Notes:	ELISA (1:1000) Western Blot (1:100-500) Immunohistochemistry (1:50-100) The optimal working dilution should be determined by the end user.
--------------------	---

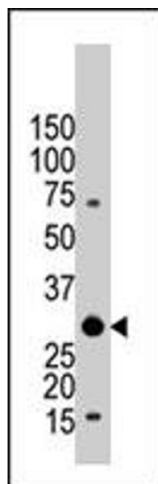
Restrictions:	For Research Use only
---------------	-----------------------

Handling

Format:	Liquid
Buffer:	In PBS (0.09 % sodium azide)
Preservative:	Sodium azide
Precaution of Use:	This product contains Sodium azide: a POISONOUS AND HAZARDOUS SUBSTANCE which should be handled by trained staff only.
Storage:	4 °C,-20 °C
Storage Comment:	Store at 4°C. For long term storage store at -20°C. Aliquot to avoid repeated freezing and thawing.

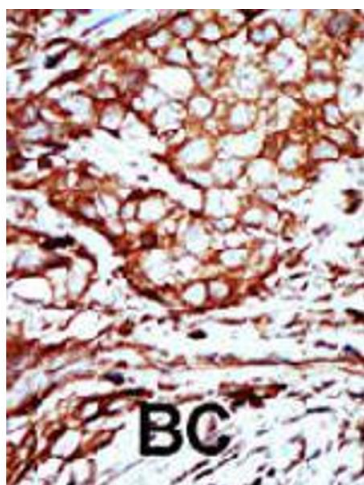
Publications

Product cited in:	<p>Li, Inoki, Vacratsis, Guan: "The p38 and MK2 kinase cascade phosphorylates tuberin, the tuberous sclerosis 2 gene product, and enhances its interaction with 14-3-3." in: The Journal of biological chemistry, Vol. 278, Issue 16, pp. 13663-71, (2003) (PubMed).</p> <p>Cavet, Lehoux, Berk: "14-3-3beta is a p90 ribosomal S6 kinase (RSK) isoform 1-binding protein that negatively regulates RSK kinase activity." in: The Journal of biological chemistry, Vol. 278, Issue 20, pp. 18376-83, (2003) (PubMed).</p> <p>Komori, Ishizawa, Arai, Hirose, Mizutani, Oda: "Immunoexpression of 14-3-3 proteins in glial cytoplasmic inclusions of multiple system atrophy." in: Acta neuropathologica, Vol. 106, Issue 1, pp. 66-70, (2003) (PubMed).</p>
-------------------	--



Western Blotting

Image 1. The YWHAB polyclonal antibody is used in Western blot to detect YWHAB in Jurkat cell lysate.



Immunohistochemistry

Image 2. Formalin-fixed and paraffin-embedded human breast cancer tissue reacted with YWHAB polyclonal antibody, which was peroxidase-conjugated to the secondary antibody, followed by AEC staining. This data demonstrates the use of this antibody for immunohistochemistry; clinical relevance has not been evaluated.