

Datasheet for ABIN544990
anti-GUCY1A2 antibody (C-Term)[2 Images](#)[3 Publications](#)[Go to Product page](#)

Overview

Quantity:	400 µL
Target:	GUCY1A2
Binding Specificity:	C-Term
Reactivity:	Human
Host:	Rabbit
Clonality:	Polyclonal
Conjugate:	This GUCY1A2 antibody is un-conjugated
Application:	Western Blotting (WB), ELISA, Immunohistochemistry (Paraffin-embedded Sections) (IHC (p))

Product Details

Purpose:	Rabbit polyclonal antibody raised against synthetic peptide of GUCY1A2.
Immunogen:	A synthetic peptide (conjugated with KLH) corresponding to C-terminus of human GUCY1A2.
Cross-Reactivity:	Human

Target Details

Target:	GUCY1A2
Alternative Name:	GCS-alpha-2 / GUCY1A2 (GUCY1A2 Products)
Gene ID:	2977

Application Details

Application Notes:	ELISA (1:1000) Western Blot (1:50-200) Immunohistochemistry (1:50-100) The optimal working dilution should be determined by the end user.
--------------------	--

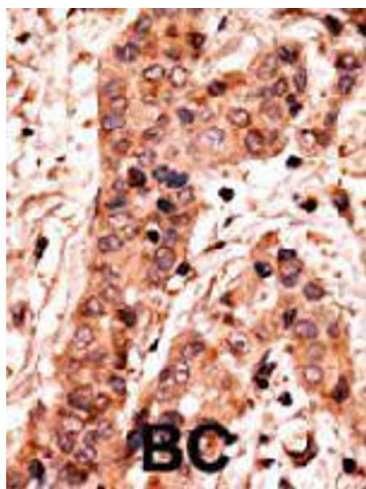
Restrictions:	For Research Use only
---------------	-----------------------

Handling

Format:	Liquid
Buffer:	In PBS (0.09 % sodium azide)
Preservative:	Sodium azide
Precaution of Use:	This product contains Sodium azide: a POISONOUS AND HAZARDOUS SUBSTANCE which should be handled by trained staff only.
Storage:	4 °C, -20 °C
Storage Comment:	Store at 4°C. For long term storage store at -20°C. Aliquot to avoid repeated freezing and thawing.

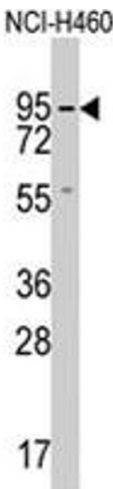
Publications

Product cited in:	Baba, Suzuki, Arai, Emson: "Expression of nNOS and soluble guanylate cyclase in schizophrenic brain." in: Neuroreport , Vol. 15, Issue 4, pp. 677-80, (2004) (PubMed).
	Bellamy, Wood, Garthwaite: "On the activation of soluble guanylyl cyclase by nitric oxide." in: Proceedings of the National Academy of Sciences of the United States of America , Vol. 99, Issue 1, pp. 507-10, (2002) (PubMed).
	Russwurm, Wittau, Koesling: "Guanylyl cyclase/PSD-95 interaction: targeting of the nitric oxide-sensitive alpha2beta1 guanylyl cyclase to synaptic membranes." in: The Journal of biological chemistry , Vol. 276, Issue 48, pp. 44647-52, (2001) (PubMed).



Immunohistochemistry

Image 1. Formalin-fixed and paraffin-embedded human breast cancer tissue reacted with GUCY1A2 polyclonal antibody , which was peroxidase-conjugated to the secondary antibody, followed by AEC staining. This data demonstrates the use of this antibody for immunohistochemistry; clinical relevance has not been evaluated.



Western Blotting

Image 2. Western blot analysis of GUCY1A2 polyclonal antibody in NCI-H460 cell lysate (35 ug/lane). GUCY1A2 (arrow) was detected using the purified polyclonal antibody.