

Datasheet for ABIN545030
anti-PTPN3 antibody (Internal Region)[Go to Product page](#)

2 Images

Overview

Quantity:	400 µL
Target:	PTPN3
Binding Specificity:	Internal Region
Reactivity:	Human, Mouse
Host:	Rabbit
Clonality:	Polyclonal
Conjugate:	This PTPN3 antibody is un-conjugated
Application:	Western Blotting (WB), ELISA, Immunohistochemistry (Paraffin-embedded Sections) (IHC (p))

Product Details

Purpose:	Rabbit polyclonal antibody raised against synthetic peptide of PTPN3.
Immunogen:	A synthetic peptide (conjugated with KLH) corresponding to internal region of human PTPN3.
Cross-Reactivity:	Human, Mouse

Target Details

Target:	PTPN3
Alternative Name:	PTPN3 / PTPH1 (PTPN3 Products)
Gene ID:	5774

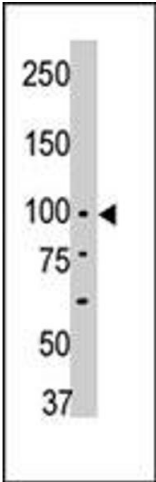
Application Details

Application Notes:	ELISA (1:1000) Western Blot (1:100-500) Immunohistochemistry (1:10-50) The optimal working dilution should be determined by the end user.
Restrictions:	For Research Use only

Handling

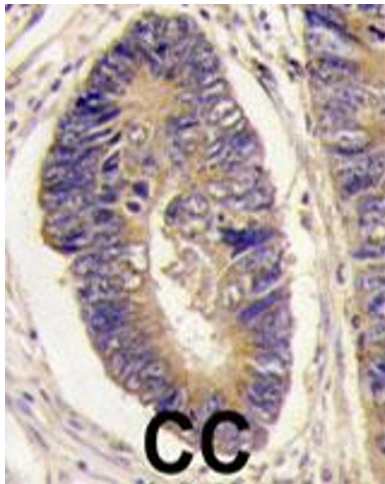
Format:	Liquid
Buffer:	In PBS (0.09 % sodium azide)
Preservative:	Sodium azide
Precaution of Use:	This product contains Sodium azide: a POISONOUS AND HAZARDOUS SUBSTANCE which should be handled by trained staff only.
Storage:	4 °C, -20 °C
Storage Comment:	Store at 4°C. For long term storage store at -20°C. Aliquot to avoid repeated freezing and thawing.

Images



Western Blotting

Image 1. The PTPN3 polyclonal antibody is used in Western blot to detect PTPN3 in mouse brain tissue lysate.



Immunohistochemistry

Image 2. Formalin-fixed and paraffin-embedded human colon carcinoma tissue reacted with PTPN3 polyclonal antibody , which was peroxidase-conjugated to the secondary antibody, followed by DAB staining. This data demonstrates the use of this antibody for immunohistochemistry; clinical relevance has not been evaluated.