

Datasheet for ABIN545062
anti-DUSP10 antibody (N-Term)

3 Images

1 Publication

[Go to Product page](#)

Overview

Quantity:	400 µL
Target:	DUSP10
Binding Specificity:	N-Term
Reactivity:	Human, Mouse
Host:	Rabbit
Clonality:	Polyclonal
Conjugate:	This DUSP10 antibody is un-conjugated
Application:	Western Blotting (WB), ELISA, Immunohistochemistry (Paraffin-embedded Sections) (IHC (p))

Product Details

Purpose:	Rabbit polyclonal antibody raised against synthetic peptide of DUSP10.
Immunogen:	A synthetic peptide (conjugated with KLH) corresponding to N-terminus of human DUSP10.
Cross-Reactivity:	Human, Mouse

Target Details

Target:	DUSP10
Alternative Name:	DUSP10 / MKP5 (DUSP10 Products)
Gene ID:	11221

Application Details

Application Notes:	ELISA (1:1000) Western Blot (1:100-500) Immunohistochemistry (1:50-100) The optimal working dilution should be determined by the end user.
--------------------	---

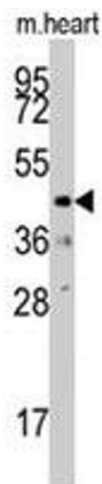
Restrictions:	For Research Use only
---------------	-----------------------

Handling

Format:	Liquid
Buffer:	In PBS (0.09 % sodium azide)
Preservative:	Sodium azide
Precaution of Use:	This product contains Sodium azide: a POISONOUS AND HAZARDOUS SUBSTANCE which should be handled by trained staff only.
Storage:	4 °C, -20 °C
Storage Comment:	Store at 4°C. For long term storage store at -20°C. Aliquot to avoid repeated freezing and thawing.

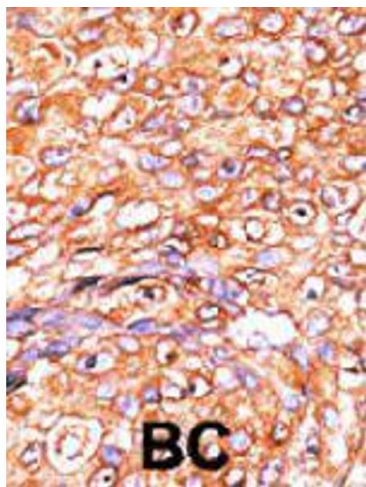
Publications

Product cited in:	Theodosiou, Smith, Gillieron, Arkinstall, Ashworth: "MKP5, a new member of the MAP kinase phosphatase family, which selectively dephosphorylates stress-activated kinases." in: Oncogene , Vol. 18, Issue 50, pp. 6981-8, (2000) (PubMed).
-------------------	--



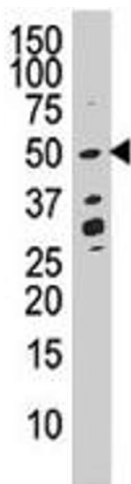
Western Blotting

Image 1. Western blot analysis of DUSP10 polyclonal antibody in mouse heart tissue lysates (35 ug/lane). DUSP10 (arrow) was detected using the purified polyclonal antibody (1 : 60 dilution).



Immunohistochemistry

Image 2. Formalin-fixed and paraffin-embedded human breast cancer tissue reacted with DUSP10 polyclonal antibody, which was peroxidase-conjugated to the secondary antibody, followed by AEC staining. This data demonstrates the use of this antibody for immunohistochemistry; clinical relevance has not been evaluated.



Western Blotting

Image 3. Western blot analysis of DUSP10 polyclonal antibody in CEM cell lysate (35 ug/lane). DUSP10 (arrow) was detected using the purified polyclonal antibody (1 : 60 dilution).