

Datasheet for ABIN545068
anti-DUSP14 antibody (N-Term)[Go to Product page](#)

2 Images

1 Publication

Overview

Quantity:	400 µL
Target:	DUSP14
Binding Specificity:	N-Term
Reactivity:	Human, Mouse
Host:	Rabbit
Clonality:	Polyclonal
Conjugate:	This DUSP14 antibody is un-conjugated
Application:	Western Blotting (WB), ELISA, Immunohistochemistry (Paraffin-embedded Sections) (IHC (p))

Product Details

Purpose:	Rabbit polyclonal antibody raised against synthetic peptide of DUSP14.
Immunogen:	A synthetic peptide (conjugated with KLH) corresponding to N-terminus of human DUSP14.
Cross-Reactivity:	Human, Mouse

Target Details

Target:	DUSP14
Alternative Name:	DUSP14 / MKP6 (DUSP14 Products)
Gene ID:	11072

Application Details

Application Notes:	ELISA (1:1000) Western Blot (1:100-500) Immunohistochemistry (1:50-100) The optimal working dilution should be determined by the end user.
--------------------	---

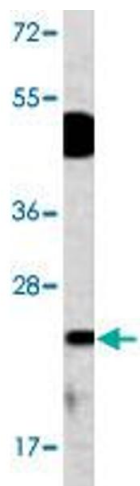
Restrictions:	For Research Use only
---------------	-----------------------

Handling

Format:	Liquid
Buffer:	In PBS (0.09 % sodium azide)
Preservative:	Sodium azide
Precaution of Use:	This product contains Sodium azide: a POISONOUS AND HAZARDOUS SUBSTANCE which should be handled by trained staff only.
Storage:	4 °C, -20 °C
Storage Comment:	Store at 4°C. For long term storage store at -20°C. Aliquot to avoid repeated freezing and thawing.

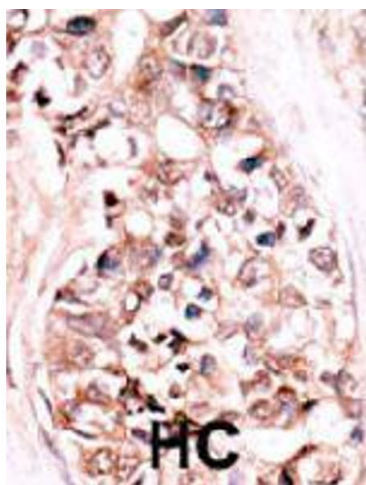
Publications

Product cited in:	Marti, Krause, Post, Lyddane, Dupont, Sadelain, King: "Negative-feedback regulation of CD28 costimulation by a novel mitogen-activated protein kinase phosphatase, MKP6." in: Journal of immunology (Baltimore, Md. : 1950) , Vol. 166, Issue 1, pp. 197-206, (2001) (PubMed).
-------------------	---



Western Blotting

Image 1. Western blot analysis of mouse bladder tissue lysate (35 ug/lane) with DUSP14 polyclonal antibody .



Immunohistochemistry

Image 2. Formalin-fixed and paraffin-embedded human hepatocellular carcinoma tissue reacted with DUSP14 polyclonal antibody , which was peroxidase-conjugated to the secondary antibody, followed by AEC staining. This data demonstrates the use of this antibody for immunohistochemistry; clinical relevance has not been evaluated.