

Datasheet for ABIN545129
anti-USP16 antibody (AA 132-160)[Go to Product page](#)

2 Images

1 Publication

Overview

Quantity:	400 µL
Target:	USP16
Binding Specificity:	AA 132-160
Reactivity:	Human
Host:	Rabbit
Clonality:	Polyclonal
Conjugate:	This USP16 antibody is un-conjugated
Application:	Western Blotting (WB), ELISA

Product Details

Purpose:	Rabbit polyclonal antibody raised against synthetic peptide of USP16.
Immunogen:	A synthetic peptide (conjugated with KLH) corresponding to amino acids 132-160 of human USP16.
Cross-Reactivity:	Human

Target Details

Target:	USP16
Alternative Name:	USP16 (USP16 Products)
Gene ID:	10600

Application Details

Application Notes:	ELISA (1:1000) Western Blot (1:100-500) Immunohistochemistry (1:50-100) The optimal working dilution should be determined by the end user.
--------------------	---

Restrictions:	For Research Use only
---------------	-----------------------

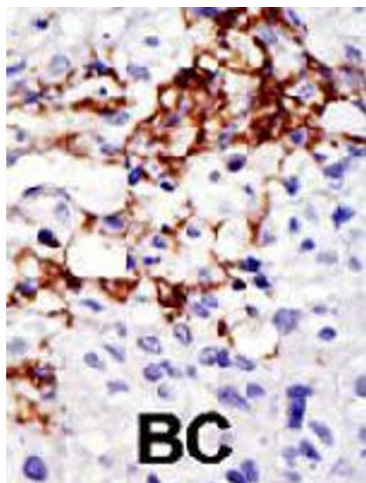
Handling

Format:	Liquid
Buffer:	In PBS (0.09 % sodium azide).
Preservative:	Sodium azide
Precaution of Use:	This product contains Sodium azide: a POISONOUS AND HAZARDOUS SUBSTANCE which should be handled by trained staff only.
Storage:	4 °C, -20 °C
Storage Comment:	Store at 4°C. For long term storage store at -20°C. Aliquot to avoid repeated freezing and thawing.

Publications

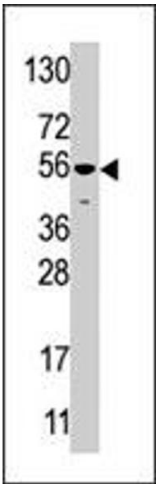
Product cited in:	Puente, Sánchez, Overall, López-Otín: "Human and mouse proteases: a comparative genomic approach." in: Nature reviews. Genetics , Vol. 4, Issue 7, pp. 544-58, (2003) (PubMed).
-------------------	--

Images



Immunohistochemistry

Image 1. Formalin-fixed and paraffin-embedded human cancer tissue reacted with USP16 polyclonal antibody , which was peroxidase-conjugated to the secondary antibody, followed by DAB staining . This data demonstrates the use of this antibody for immunohistochemistry; clinical relevance has not been evaluated . BC = breast carcinoma .



Western Blotting

Image 2. Western blot analysis of USP16 polyclonal antibody in mouse liver tissue lysate (35 ug/lane). USP16 (arrow) was detected using the purified USP16 polyclonal antibody (1 : 60 dilution)