



Datasheet for ABIN545174
anti-LLGL2 antibody (C-Term)



[Go to Product page](#)

1 Image

2 Publications

Overview

Quantity:	400 µL
Target:	LLGL2
Binding Specificity:	C-Term
Reactivity:	Human
Host:	Rabbit
Clonality:	Polyclonal
Conjugate:	This LLGL2 antibody is un-conjugated
Application:	Western Blotting (WB), ELISA

Product Details

Purpose:	Rabbit polyclonal antibody raised against synthetic peptide of LLGL2.
Immunogen:	A synthetic peptide (conjugated with KLH) corresponding to C-terminus of human LLGL2.
Cross-Reactivity:	Human

Target Details

Target:	LLGL2
Alternative Name:	LLGL2 (LLGL2 Products)
Gene ID:	3993
Pathways:	WNT Signaling

Application Details

Application Notes: ELISA (1:1000)
Western Blot (1:50-100)
The optimal working dilution should be determined by the end user.

Restrictions: For Research Use only

Handling

Format: Liquid

Buffer: In PBS (0.09 % sodium azide)

Preservative: Sodium azide

Precaution of Use: This product contains Sodium azide: a POISONOUS AND HAZARDOUS SUBSTANCE which should be handled by trained staff only.

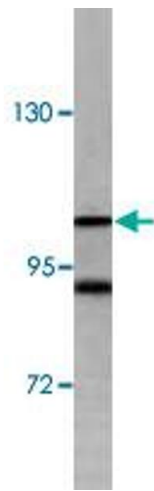
Storage: 4 °C,-20 °C

Storage Comment: Store at 4°C. For long term storage store at -20°C.
Aliquot to avoid repeated freezing and thawing.

Publications

Product cited in: Yasumi, Sakisaka, Hoshino, Kimura, Sakamoto, Yamanaka, Ohno, Takai: "Direct binding of Lgl2 to LGN during mitosis and its requirement for normal cell division." in: **The Journal of biological chemistry**, Vol. 280, Issue 8, pp. 6761-5, (2005) ([PubMed](#)).

Katoh, Katoh: "Identification and characterization of human LLGL4 gene and mouse Llg14 gene in silico." in: **International journal of oncology**, Vol. 24, Issue 3, pp. 737-42, (2004) ([PubMed](#)).



Western Blotting

Image 1. Western blot analysis of K-562 cell lysate (35 ug/lane) with LLGL2 polyclonal antibody .